

For Research Use Only

# Cardinal Red™ Anti-Human PD-L1/CD274 (29E.2A3)

Catalog Number:CR-65081



## Basic Information

Catalog Number:

CR-65081

Size:

100tests , 5 ul/test

Source:

Mouse

Isotype:

IgG2b, kappa

GenBank Accession Number:

BC069381

GeneID (NCBI):

29126

UNIPROT ID:

Q9NZQ7

Full Name:

CD274 molecule

Purification Method:

Affinity purification

CloneNo.:

29E.2A3

Excitation/Emission maxima wavelengths:

592 nm / 611 nm

## Applications

Tested Applications:

FC

Species Specificity:

human

## Background Information

Programmed cell death ligand 1 (PD-L1, CD274, or B7-H1), is the first member of B7 family to be discovered. B7 family molecules are type I transmembrane proteins belonging to the immunoglobulin superfamily. In concert with their CD28 family receptors, the B7s are key regulators of the adaptive immune response. PD-L1 is suggested as a negative regulator of T and B cell, and plays important role in mediating tolerance of lymphocytes to self-antigens. It is also involved in the costimulatory signal, essential for T-cell proliferation and production of IL10 and IFNG, in an IL2-dependent and a PD-1-independent manner.

## Storage

Storage:

Store at 2-8°C. Avoid exposure to light. Stable for one year after shipment.

Storage Buffer:

PBS with 0.09% sodium azide and 0.5% BSA.

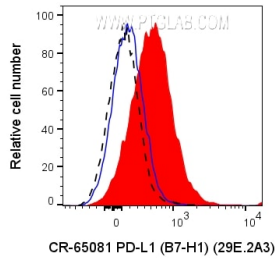
For technical support and original validation data for this product please contact:

T: 1 (888) 4PTGLAB (1-888-478-4522) (toll free in USA), or 1(312) 455-8498 (outside USA)

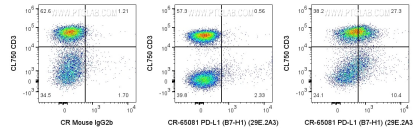
E: [proteintech@ptglab.com](mailto:proteintech@ptglab.com)  
W: [ptglab.com](http://ptglab.com)

This product is exclusively available under Proteintech Group brand and is not available to purchase from any other manufacturer.

## Selected Validation Data



1x10<sup>6</sup> PHA treated (3 days) human PBMCs were surface stained with 5 ul Cardinal Red™ Anti-Human PD-L1 (B7-H1) (CR-65081, Clone:29E.2A3) (red) or Cardinal Red™ Mouse IgG2b Isotype Control (blue). 1x10<sup>6</sup> untreated human PBMCs were surface stained with 5 ul Cardinal Red™ Anti-Human PD-L1 (B7-H1) (CR-65081, Clone:29E.2A3) (black dashed). Cells were treated with FC Receptor Block prior to staining. Cells were not fixed. Lymphocytes were gated.



1x10<sup>6</sup> PHA treated (3 days) human PBMCs were surface stained with CL750 Anti-Human CD3 and 5 ul Cardinal Red™ Anti-Human PD-L1 (B7-H1) (CR-65081, Clone:29E.2A3) (right) or Cardinal Red™ Mouse IgG2b Isotype Control (left). 1x10<sup>6</sup> untreated human PBMCs were surface stained with 5 ul Cardinal Red™ Anti-Human PD-L1 (B7-H1) (CR-65081, Clone:29E.2A3) (center). Cells were treated with FC Receptor Block prior to staining. Cells were not fixed. Lymphocytes