

For Research Use Only

CoraLux Violet 510 Rabbit IgG Isotype Control Recombinant Antibody

Catalog Number: CLV510-98136



Basic Information

Catalog Number:

CLV510-98136

GenBank Accession Number:

GeneID (NCBI):

Full Name:

Purification Method:

Protein A purification

Size:

100ug , 500 ug/ml

Source:

Rabbit

Isotype:

IgG

CloneNo.:

240953C9

Recommended Dilutions:

FC: 0.25 ug per 10⁶ cells in a 100 µl suspension

Excitation/Emission maxima wavelengths:

410 nm / 501 nm

Applications

Tested Applications:

FC

Species Specificity:

n/a

Positive Controls:

FC : mouse bone marrow cells,

Background Information

This product is an isotype control antibody, which is used to estimate the non-specific binding of target primary antibodies due to Fc receptor binding or other protein-protein interactions. An isotype control antibody should have the same immunoglobulin type and be used at the same concentration as the test antibody.

Storage

Storage:

Store at 2-8°C. Avoid exposure to light. Stable for one year after shipment.

Storage Buffer:

PBS with 0.09% sodium azide, pH7.3

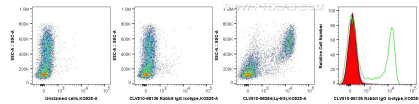
For technical support and original validation data for this product please contact:

T: 1 (888) 4PTGLAB (1-888-478-4522) (toll free in USA), or 1(312) 455-8498 (outside USA)

E: proteintech@ptglab.com
W: ptglab.com

This product is exclusively available under Proteintech Group brand and is not available to purchase from any other manufacturer.

Selected Validation Data



1x10⁶ mouse bone marrow cells were surface stained with 0.25 ug CoraLux Violet 510 Rabbit IgG Isotype Control RecAb (CLV510-98136, Clone: 240953C9)(red in histogram), or 0.25 ug CoraLux Violet 510 Anti-Mouse Ly-6G Rabbit Recombinant Antibody (CLV510-98284, Clone: 242141B11) (green in histogram), or unstained (blue in histogram). Cells were incubated with FC Receptor Block prior to staining. Cells were not fixed.