

For Research Use Only

# CoraLite® Plus 750 Anti-Human IL3RA/CD123 Rabbit Recombinant Antibody

Catalog Number: CL750-98107



## Basic Information

Catalog Number:

CL750-98107

Size:

100 tests, 5 µl/test

Source:

Rabbit

Isotype:

IgG

GenBank Accession Number:

BC035407

GeneID (NCBI):

3563

ENSEMBL Gene ID:

ENSG00000185291

UNIPROT ID:

P26951

Full Name:

interleukin 3 receptor, alpha (low affinity)

Calculated MW:

378 aa, 43 kDa

Purification Method:

Protein A purification

CloneNo.:

241268E3

Excitation/Emission maxima wavelengths:

755 nm / 780 nm

## Applications

Tested Applications:

FC

Species Specificity:

human

## Background Information

Interleukin-3 receptor subunit alpha (IL3RA), also known as CD123, belongs to the cytokine receptor family. It is a glycoprotein containing an extracellular domain, involving a predicted Ig-like domain, two FnIII domains, a transmembrane domain and an intracellular domain (PMID: 24513123). IL3RA is expressed on hematopoietic progenitor cells, plasmacytoid dendritic cells, basophils, monocytes, some B cells, and in a variety of hematologic malignancies (PMID: 10527461; 34855461). IL-3 initially binds to IL3RA and subsequently recruits the beta chain (CD131) to form the high-affinity receptor, resulting in the activation of a series of signaling pathways including the JAK/STAT, Ras-MAPK, and phosphatidylinositol 3-kinase pathways (PMID: 29296749). IL-3R signaling regulates the proliferation, survival, and differentiation of hematopoietic cells.

## Storage

Storage:

Store at 2-8°C. Avoid exposure to light. Stable for one year after shipment.

Storage Buffer:

PBS with 0.09% sodium azide and 0.5% BSA

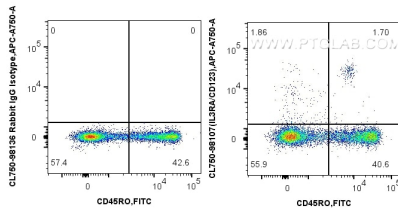
For technical support and original validation data for this product please contact:

T: 1 (888) 4PTGLAB (1-888-478-4522) (toll free in USA), or 1(312) 455-8498 (outside USA)

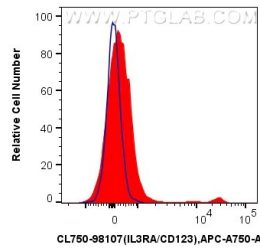
E: [proteintech@ptglab.com](mailto:proteintech@ptglab.com)  
W: [ptglab.com](http://ptglab.com)

This product is exclusively available under Proteintech Group brand and is not available to purchase from any other manufacturer.

## Selected Validation Data



1x10<sup>6</sup> human PBMCs were surface stained with FITC Plus Anti-Human CD45RO, and 5 ul CoraLite® Plus 750 Anti-Human IL3RA/CD123 Rabbit RecAb (CL750-98107, Clone: 241268E3) or CoraLite® Plus 750 Rabbit IgG Isotype Control RecAb (CL750-98136, Clone: 240953C9). Cells were incubated with FC Receptor Block prior to staining. Cells were not fixed. Lymphocytes were gated.



1x10<sup>6</sup> human PBMCs were surface stained with 5 ul CoraLite® Plus 750 Anti-Human IL3RA/CD123 Rabbit RecAb (CL750-98107, Clone: 241268E3)(red), or CoraLite® Plus 750 Rabbit IgG Isotype Control RecAb (CL750-98136, Clone: 240953C9) (blue). Cells were incubated with FC Receptor Block prior to staining. Cells were not fixed. Lymphocytes were gated.