

For Research Use Only

# CoraLite® Plus 750 Anti-Human CD86 Rabbit Recombinant Antibody



Catalog Number: CL750-98043

## Basic Information

<b>Catalog Number:</b> CL750-98043	<b>GenBank Accession Number:</b> NM_175862	<b>Purification Method:</b> Protein A purification
<b>Size:</b> 100tests , 5 µl/test	<b>GeneID (NCBI):</b> 942	<b>CloneNo.:</b> 240429C6
<b>Source:</b> Rabbit	<b>ENSEMBL Gene ID:</b> ENSG00000114013	<b>Excitation/Emission maxima wavelengths:</b> 755 nm / 780 nm
<b>Isotype:</b> IgG	<b>UNIPROT ID:</b> P42081	
	<b>Full Name:</b> CD86 molecule	
	<b>Calculated MW:</b> 329 aa, 38 kDa	

## Applications

**Tested Applications:**  
FC

**Species Specificity:**  
human

## Background Information

CD86 (also known as B7-2) is a costimulatory molecule belonging to the immunoglobulin superfamily. Primarily expressed on antigen-presenting cells (APCs), including B cells, dendritic cells, and macrophages, CD86 is the ligand for two proteins at the cell surface of T cells, CD28 antigen and CTLA-4. Binding of CD86 with CD28 antigen is a costimulatory signal for activation of the T-cell. Binding of CD86 with CTLA-4 negatively regulates T-cell activation and diminishes the immune response. (PMID: 7513726; 1847722; 11029388; 27591335)

## Storage

**Storage:**  
Store at 2-8°C. Avoid exposure to light.

**Storage Buffer:**  
PBS with 0.09% sodium azide and 0.5% BSA.

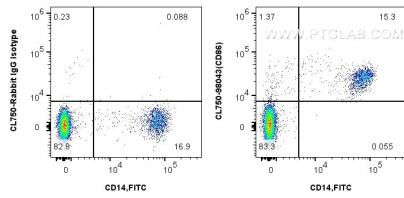
For technical support and original validation data for this product please contact:

T: 1 (888) 4PTGLAB (1-888-478-4522) (toll free in USA), or 1(312) 455-8498 (outside USA)

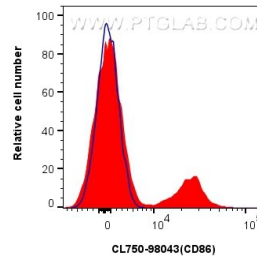
E: [proteintech@ptglab.com](mailto:proteintech@ptglab.com)  
W: [ptglab.com](http://ptglab.com)

This product is exclusively available under Proteintech Group brand and is not available to purchase from any other manufacturer.

## Selected Validation Data



1x10<sup>6</sup> human PBMCs were surface stained with FITC Anti-Human CD14 and 5 ul CoraLite® Plus 750 Anti-Human CD86 Rabbit Recombinant Antibody (CL750-98043, Clone: 240429C6) or Isotype Control. Cells were incubated with FC Receptor Block prior to staining. Cells were not fixed.



1x10<sup>6</sup> human PBMCs were surface stained with 5 ul CoraLite® Plus 750 Anti-Human CD86 Rabbit Recombinant Antibody (CL750-98043, Clone: 240429C6) (red), or Isotype Control (blue). Cells were incubated with FC Receptor Block prior to staining. Cells were not fixed.