

For Research Use Only

CoraLite® Plus 750 Anti-Mouse CD206 Rabbit Recombinant Antibody



Catalog Number: CL750-98031

Basic Information

Catalog Number: CL750-98031	GenBank Accession Number: NM_008625.2	Purification Method: Protein A purification
Size: 100ug , 500 µg/ml	GeneID (NCBI): 17533	CloneNo.: 240344D12
Source: Rabbit	UNIPROT ID: Q2HZ94	Excitation/Emission maxima wavelengths: 755 nm / 780 nm
Isotype: IgG	Full Name: mannose receptor, C type 1	
	Calculated MW: 165 kDa	

Applications

Tested Applications:
FC

Species Specificity:
mouse

Background Information

CD206, also named as MMR, CLEC13D and MRC1, is a type I membrane receptor that mediates the endocytosis of glycoproteins by macrophages. CD206 has been shown to bind high-mannose structures on the surface of potentially pathogenic viruses, bacteria, and fungi so that they can be neutralized by phagocytic engulfment. CD206 is a 170 kDa transmembrane protein which contains 5 domains: an amino-terminal cysteine-rich region, a fibronectin type II repeat, a series of eight tandem lectin-like carbohydrate recognition domains (responsible for the recognition of mannose and fucose), a transmembrane domain, and an intracellular carboxy-terminal tail. It is expressed on most tissue macrophages, in vitro derived dendritic cells, lymphatic and sinusoidal endothelia.

Storage

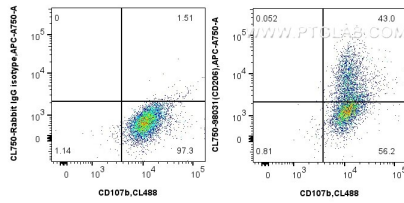
Storage:
Store at 2-8°C. Avoid exposure to light.

Storage Buffer:
PBS with 0.09% sodium azide.

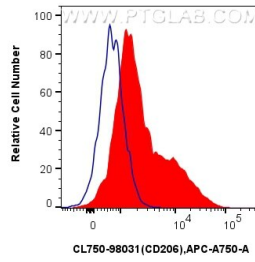
For technical support and original validation data for this product please contact:
T: 1 (888) 4PTGLAB (1-888-478-4522) (toll free in USA), or 1(312) 455-8498 (outside USA) E: proteintech@ptglab.com
W: ptglab.com

This product is exclusively available under Proteintech Group brand and is not available to purchase from any other manufacturer.

Selected Validation Data



1x10⁶ mouse peritoneal macrophages were surface stained with CoraLite® Plus 488 Anti-Mouse CD107b / LAMP2 and 0.25 ug CoraLite® Plus 750 Anti-Mouse CD206 Rabbit Recombinant Antibody (CL750-98031, Clone:240344D12) or Isotype Control. Cells were incubated with FC Receptor Block prior to staining. Cells were not fixed.



1x10⁶ mouse peritoneal macrophages were surface stained with 0.25 ug CoraLite® Plus 750 Anti-Mouse CD206 Rabbit Recombinant Antibody (CL750-98031, Clone:240344D12) (red) or Isotype Control (blue). Cells were incubated with FC Receptor Block prior to staining. Cells were not fixed.