

For Research Use Only

# CoraLite® Plus 750-conjugated IFI35 Recombinant antibody



Catalog Number: CL750-83160-4

## Basic Information

<b>Catalog Number:</b> CL750-83160-4	<b>GenBank Accession Number:</b> BC001356	<b>Purification Method:</b> Protein A purification
<b>Size:</b> 100ul , Concentration: 1000 µg/ml by Nanodrop;	<b>GeneID (NCBI):</b> 3430	<b>CloneNo.:</b> 240063E1
<b>Source:</b> Rabbit	<b>UNIPROT ID:</b> P80217	<b>Recommended Dilutions:</b> WB 1:1000-1:4000
<b>Isotype:</b> IgG	<b>Full Name:</b> interferon-induced protein 35	<b>Excitation/Emission maxima wavelengths:</b> 755 nm / 780 nm
<b>Immunogen Catalog Number:</b> AG34653	<b>Calculated MW:</b> 31 kDa	
	<b>Observed MW:</b> 31-35 kDa	

## Applications

<b>Tested Applications:</b> WB	<b>Positive Controls:</b> WB : Jurkat cells, A549 cells, HeLa cells
<b>Species Specificity:</b> Human	

## Background Information

IFI35 (interferon induced protein 35), also known as IFP35. It is expected to be located in cytoplasm, nucleus and extracellular space. The protein is expressed in a wide range of cell types, including fibroblasts, macrophages, and epithelial cells. Involved in several processes, including macrophage activation involved in immune response; positive regulation of defense response; and regulation of signal transduction. And the calculated molecular weight of IFI35 is 31 kDa.

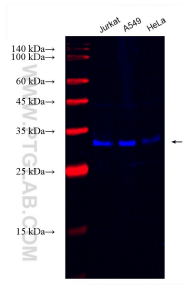
## Storage

**Storage:**  
Store at -20°C. Avoid exposure to light. Stable for one year after shipment.  
**Storage Buffer:**  
PBS with 50% Glycerol, 0.05% Proclin300, 0.5% BSA, pH 7.3.  
Aliquoting is unnecessary for -20°C storage

For technical support and original validation data for this product please contact:  
T: 1 (888) 4PTGLAB (1-888-478-4522) (toll free in USA), or 1(312) 455-8498 (outside USA)  
E: [proteintech@ptglab.com](mailto:proteintech@ptglab.com)  
W: [ptglab.com](http://ptglab.com)

This product is exclusively available under Proteintech Group brand and is not available to purchase from any other manufacturer.

## Selected Validation Data



Various lysates were subjected to SDS PAGE followed by western blot with CL750-83160-4 (IF135 antibody) at dilution of 1:2000 incubated at room temperature for 1.5 hours.