

For Research Use Only

# CoraLite® Plus 750-conjugated MDM1 Recombinant antibody

Catalog Number:CL750-83141-2



## Basic Information

<b>Catalog Number:</b> CL750-83141-2	<b>GenBank Accession Number:</b> BC028355	<b>Purification Method:</b> Protein A purification
<b>Size:</b> 100ul , Concentration: 1000 ug/ml by Nanodrop;	<b>GeneID (NCBI):</b> 56890	<b>CloneNo.:</b> 230425E10
<b>Source:</b> Rabbit	<b>UNIPROT ID:</b> Q8TC05	<b>Recommended Dilutions:</b> WB 1:500-1:1000
<b>Isotype:</b> IgG	<b>Full Name:</b> Mdm1 nuclear protein homolog (mouse)	<b>Excitation/Emission maxima wavelengths:</b> 755 nm / 780 nm
<b>Immunogen Catalog Number:</b> AG10541	<b>Calculated MW:</b> 81 kDa	
	<b>Observed MW:</b> 102 kDa	

## Applications

<b>Tested Applications:</b> WB	<b>Positive Controls:</b> WB : Raji cells, HEK-293 cells
<b>Species Specificity:</b> human, mouse	

## Background Information

Mdm1 was upregulated during ciliogenesis in multiciliated tracheal epithelial cells and localized to centrioles and cilia when transfected into NIH/3T3 cells. Mdm1 is a microtubule-binding protein that inhibits centrosome duplication when overexpressed. Proteomic analysis revealed that Mdm1 was also detected in the mouse photoreceptor sensory cilium complex and the outer segment (OS) of photoreceptor cells in the retina, suggesting that Mdm1 might be involved in the regulation of the functions and structure of the centrosome, as well as cilia. (PMID: 36171205)

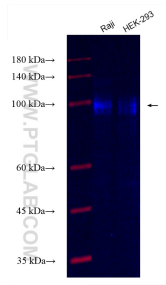
## Storage

**Storage:**  
Store at -20°C. Avoid exposure to light. Stable for one year after shipment.  
**Storage Buffer:**  
PBS with 50% Glycerol, 0.05% Proclin300, 0.5% BSA, pH 7.3.  
Aliquoting is unnecessary for -20°C storage

For technical support and original validation data for this product please contact:  
T: 1 (888) 4PTGLAB (1-888-478-4522) (toll free in USA), or 1(312) 455-8498 (outside USA)  
E: proteintech@ptglab.com  
W: ptglab.com

This product is exclusively available under Proteintech Group brand and is not available to purchase from any other manufacturer.

## Selected Validation Data



Various lysates were subjected to SDS PAGE followed by western blot with CL750-83141-2 (MDM1 antibody) at dilution of 1:500 incubated at room temperature for 1.5 hours.