

For Research Use Only

# CoraLite® Plus 750-conjugated NEDD4 Recombinant antibody

Catalog Number:CL750-83112



## Basic Information

<b>Catalog Number:</b> CL750-83112	<b>GenBank Accession Number:</b> BC152452	<b>Purification Method:</b> Protein A purification
<b>Size:</b> 100ul , Concentration: 1000 ug/ml by Nanodrop;	<b>GeneID (NCBI):</b> 4734	<b>CloneNo.:</b> 230478F1
<b>Source:</b> Rabbit	<b>UNIPROT ID:</b> P46934	<b>Recommended Dilutions:</b> WB 1:500-1:1000
<b>Isotype:</b> IgG	<b>Full Name:</b> neural precursor cell expressed, developmentally down-regulated 4	<b>Excitation/Emission maxima wavelengths:</b> 755 nm / 780 nm
<b>Immunogen Catalog Number:</b> AG16291	<b>Calculated MW:</b> 1319 aa, 149 kDa	
	<b>Observed MW:</b> 115 kDa	

## Applications

<b>Tested Applications:</b> WB	<b>Positive Controls:</b> WB : C6 cells,
<b>Species Specificity:</b> human, mouse, rat	

## Background Information

NEDD4 and similar proteins discovered subsequently became a family of HECT ligases, comprising 9 human proteins including NEDD4, NEDD4-2 (NEDD4L), ITCH, SMURF1, SMURF2, WWP1, WWP2, NEDL1 and NEDL2. NEDD4 is a highly evolutionarily conserved protein from yeast to man, and was initially cloned as a highly expressed gene in the early embryonic brain. NEDD4 is frequently overexpressed in many different types of cancer, and decreased levels of NEDD4 can also be associated with cancer. It can be a potential therapeutic target for the treatment of human cancer.(PMID: 25527121). The human NEDD4 gene is located on chromosome 15q21.3 and comprises 30 exons (HGNC:7727) shown to encode a ~120 kDa protein. Otherwise there is a 75 kDa isoform in addition to full length NEDD4 (PMID: 24907641).

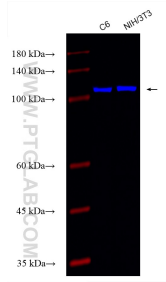
## Storage

**Storage:**  
Store at -20°C. Avoid exposure to light. Stable for one year after shipment.  
**Storage Buffer:**  
PBS with 50% Glycerol, 0.05% Proclin300, 0.5% BSA, pH 7.3.  
Aliquoting is unnecessary for -20°C storage

For technical support and original validation data for this product please contact:  
T: 1 (888) 4PTGLAB (1-888-478-4522) (toll free in USA), or 1(312) 455-8498 (outside USA)  
E: proteintech@ptglab.com  
W: ptglab.com

This product is exclusively available under Proteintech Group brand and is not available to purchase from any other manufacturer.

## Selected Validation Data



Various lysates were subjected to SDS PAGE followed by western blot with CL750-83112 (NEDD4 antibody) at dilution of 1:500 incubated at room temperature for 1.5 hours.