

For Research Use Only

# CoraLite® Plus 750-conjugated ANT1/2 Recombinant antibody

Catalog Number:CL750-83104



## Basic Information

<b>Catalog Number:</b> CL750-83104	<b>GenBank Accession Number:</b> BC056160	<b>Purification Method:</b> Protein A purification
<b>Size:</b> 100ul , Concentration: 1000 ug/ml by Nanodrop;	<b>GeneID (NCBI):</b> 292	<b>CloneNo.:</b> 230247B1
<b>Source:</b> Rabbit	<b>UNIPROT ID:</b> P05141	<b>Recommended Dilutions:</b> WB 1:500-1:1000
<b>Isotype:</b> IgG	<b>Full Name:</b> solute carrier family 25 (mitochondrial carrier; adenine nucleotide translocator), member 5	<b>Excitation/Emission maxima wavelengths:</b> 755 nm / 780 nm
<b>Immunogen Catalog Number:</b> AG11956	<b>Calculated MW:</b> 298 aa, 33 kDa	
	<b>Observed MW:</b> 32 kDa	

## Applications

<b>Tested Applications:</b> WB	<b>Positive Controls:</b> WB : C6 cells, rat liver tissue, mouse liver tissue, Neuro-2a cells
<b>Species Specificity:</b> human, mouse, rat	

## Background Information

Adenine nucleotide translocators (ANTs) are mitochondrial carrier proteins that exchange ATP and ADP between the cytoplasm and the mitochondrial matrix. Four isoforms of ANT were identified: ANT1 (encoded by SLC25A4) is highly expressed in different tissues; ANT2 (encoded by SLC25A5) is predominantly expressed in proliferating, regenerating, or undifferentiated cells; ANT3 is ubiquitously expressed; ANT4 is mainly expressed in testis and germ cells. This antibody recognizes both of ANT1 and ANT2. The predicted molecular weight of ANT1/2 protein is around 32 kDa. While 60 kDa protein can also be observed, which has been proposed as the dimer of ANT1/2. (22423112)

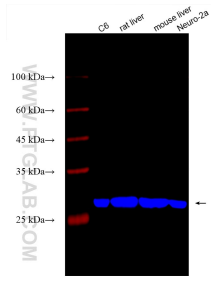
## Storage

**Storage:**  
Store at -20°C. Avoid exposure to light. Stable for one year after shipment.  
**Storage Buffer:**  
PBS with 50% Glycerol, 0.05% Proclin300, 0.5% BSA, pH 7.3.  
Aliquoting is unnecessary for -20°C storage

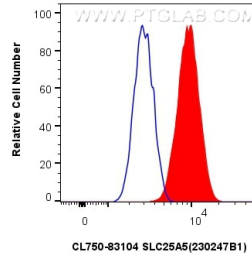
For technical support and original validation data for this product please contact:  
T: 1 (888) 4PTGLAB (1-888-478-4522) (toll free in USA), or 1(312) 455-8498 (outside USA)  
E: proteintech@ptglab.com  
W: ptglab.com

This product is exclusively available under Proteintech Group brand and is not available to purchase from any other manufacturer.

## Selected Validation Data



Various lysates were subjected to SDS PAGE followed by western blot with CL750-83104 (SLC25A5 antibody) at dilution of 1:800 incubated at room temperature for 1.5 hours.



$1 \times 10^6$  PC-3 cells were intracellularly stained with 0.4 ug CoraLite® Plus 750-conjugated SLC25A5 Recombinant antibody (CL750-83104, Clone:230247B1)(red), or 0.4 ug Isotype Control (CL750-30000) (blue). Cells were fixed with 4% PFA and permeabilized with Flow Cytometry Perm Buffer (PF00011-C).