

For Research Use Only

CoraLite® Plus 750-conjugated TAB2 Recombinant antibody

Catalog Number:CL750-82948-5



Basic Information

Catalog Number: CL750-82948-5	GenBank Accession Number: BC035910	Purification Method: Protein A purification
Size: 100ul , Concentration: 1000 ug/ml by Nanodrop;	GeneID (NCBI): 23118	CloneNo.: 230118F1
Source: Rabbit	UNIPROT ID: Q9NYJ8	Recommended Dilutions: WB 1:500-1:2000
Isotype: IgG	Full Name: mitogen-activated protein kinase kinase kinase 7 interacting protein 2	Excitation/Emission maxima wavelengths: 755 nm / 780 nm
Immunogen Catalog Number: AG5742	Calculated MW: 76 kDa	
	Observed MW: 77 kDa	

Applications

Tested Applications: WB	Positive Controls: WB : HEK-293T cells,
Species Specificity: human, mouse	

Background Information

Tab2 has a role in the inflammatory signal transduction pathway and is involved in the reversal of NCoR-dependent and NFkB- or APP-mediated gene repression and androgen antagonist response. Besides, it is identified as a cofactor for ERBB4 to assemble NCoR corepressor complex in response to neuregulin [PMID:16469706]. It also functions as an adaptor that links TAK1 and TRAF6 in response to interleukin-1 β (IL-1 β) or tumour necrosis factor- α (TNF- α), and thereby mediates TAK1 activation [PMID:11460167].

Storage

Storage:
Store at -20°C. Avoid exposure to light. Stable for one year after shipment.
Storage Buffer:
PBS with 50% Glycerol, 0.05% Proclin300, 0.5% BSA, pH 7.3.
Aliquoting is unnecessary for -20°C storage

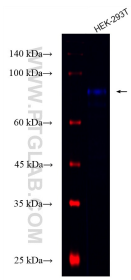
For technical support and original validation data for this product please contact:

T: 1 (888) 4PTGLAB (1-888-478-4522) (toll free
in USA), or 1(312) 455-8498 (outside USA)

E: proteintech@ptglab.com
W: ptglab.com

This product is exclusively available under Proteintech Group brand and is not available to purchase from any other manufacturer.

Selected Validation Data



Various lysates were subjected to SDS PAGE followed by western blot with CL750-82948-5 (TAB2 antibody) at dilution of 1:1000 incubated at room temperature for 1.5 hours.