

For Research Use Only

CoraLite® Plus 750-conjugated CAMP Recombinant antibody

Catalog Number:CL750-82940



Basic Information

Catalog Number: CL750-82940	GenBank Accession Number: BC055089	Purification Method: Protein A purification
Size: 100ul , Concentration: 1000 ug/ml by Nanodrop;	GeneID (NCBI): 820	CloneNo.: 230157B4
Source: Rabbit	UNIPROT ID: P49913	Recommended Dilutions: WB 1:1000-1:4000
Isotype: IgG	Full Name: cathelicidin antimicrobial peptide	Excitation/Emission maxima wavelengths: 755 nm / 780 nm
Immunogen Catalog Number: AG2622	Calculated MW: 170 aa, 19 kDa	
	Observed MW: 18 kDa	

Applications

Tested Applications: WB	Positive Controls: WB : human saliva,
Species Specificity: human, mouse	

Background Information

CAMP is a member of an antimicrobial peptide family, characterized by a highly conserved N-terminal signal peptide containing a cathelin domain and a structurally variable cationic antimicrobial peptide, which is produced by extracellular proteolysis from the C-terminus. In addition to its antibacterial, antifungal, and antiviral activities, the encoded protein functions in cell chemotaxis, immune mediator induction, and inflammatory response regulation. CAMP encodes the 18-kDa proprotein hCAP18. FALL-39 and LL-37 are the mature cathelicidin peptides. This antibody can recognize all the proprotein and cleaved species.

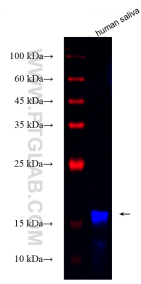
Storage

Storage:
Store at -20°C. Avoid exposure to light. Stable for one year after shipment.
Storage Buffer:
PBS with 50% Glycerol, 0.05% Proclin300, 0.5% BSA, pH 7.3.
Aliquoting is unnecessary for -20°C storage

For technical support and original validation data for this product please contact:
T: 1 (888) 4PTGLAB (1-888-478-4522) (toll free in USA), or 1(312) 455-8498 (outside USA)
E: proteintech@ptglab.com
W: ptglab.com

This product is exclusively available under Proteintech Group brand and is not available to purchase from any other manufacturer.

Selected Validation Data



Various lysates were subjected to SDS PAGE followed by western blot with CL750-82940 (CAMP antibody) at dilution of 1:2000 incubated at room temperature for 1.5 hours.