

For Research Use Only

CoraLite® Plus 750-conjugated OS9 Recombinant antibody

Catalog Number: CL750-82932



Basic Information

Catalog Number:

CL750-82932

Size:

100ul , Concentration: 1000 ug/ml by
Nanodrop;

Source:

Rabbit

Isotype:

IgG

Immunogen Catalog Number:

AG0106

GenBank Accession Number:

BC000532

GeneID (NCBI):

10956

UNIPROT ID:

Q13438

Full Name:

osteosarcoma amplified 9,
endoplasmic reticulum associated
protein

Calculated MW:

76 kDa

Observed MW:

83-97 kDa

Purification Method:

Protein A purification

CloneNo.:

230149B4

Recommended Dilutions:

WB 1:500-1:2000

Excitation/Emission maxima
wavelengths:

755 nm / 780 nm

Applications

Tested Applications:

WB, FC (Intra)

Species Specificity:

human

Positive Controls:

WB : MCF-7 cells, HUVEC cells, U2OS cells

Background Information

OS-9 is a ubiquitously expressed endoplasmic reticulum (ER)-associated protein originally identified as being amplified in certain osteosarcomas. It functions in ER quality control and ER-associated degradation (ERAD). There are three isoforms of this protein: OS-9.1, OS-9.2 and OS-9.3. The longest isoform, OS-9.1, contains 667 aa, OS-9.2 lacks aa 535-589, whereas OS-9.3 lacks aa 456-470 and 535-589. OS-9.1 and OS-9.2 are N-glycosylated, ubiquitously expressed in human tissues, and amplified in tumors.

Storage

Storage:

Store at -20°C. Avoid exposure to light. Stable for one year after shipment.

Storage Buffer:

PBS with 50% Glycerol, 0.05% Proclin300, 0.5% BSA, pH 7.3.

Aliquoting is unnecessary for -20°C storage

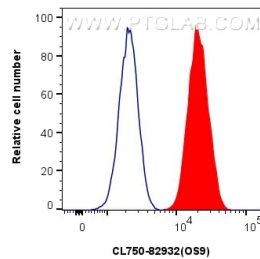
For technical support and original validation data for this product please contact:

T: 1 (888) 4PTGLAB (1-888-478-4522) (toll free
in USA), or 1(312) 455-8498 (outside USA)

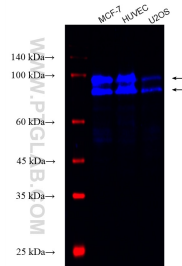
E: proteintech@ptglab.com
W: ptglab.com

This product is exclusively available under Proteintech Group brand and is not available to purchase from any other manufacturer.

Selected Validation Data



1x10⁶ HeLa cells were intracellularly stained with 0.25 ug Coralite® Plus 750 Os9 Recombinant Antibody (CL750-82932, Clone:230149B4)(red), or 0.25 ug Coralite® Plus 750 Rabbit IgG Isotype Control Recombinant Antibody (CL750-98136, Clone: 240953C9) (blue). Cells were fixed with 4% PFA and permeabilized with Flow Cytometry Perm Buffer (PF00011-C).



Various lysates were subjected to SDS PAGE followed by western blot with CL750-82932 (OS9) antibody at dilution of 1:1000 incubated at room temperature for 1.5 hours.