

For Research Use Only

CoraLite® Plus 750-conjugated ALPL Recombinant antibody

Catalog Number:CL750-82915-2



Basic Information

Catalog Number:

CL750-82915-2

Size:

100ul , Concentration: 1000 µg/ml by 249

Nanodrop;

Source:

Rabbit

Isotype:

IgG

Immunogen Catalog Number:

AG1664

GenBank Accession Number:

BC021289

GeneID (NCBI):

249

UNIPROT ID:

P05186

Full Name:

alkaline phosphatase,
liver/bone/kidney

Calculated MW:

57 kDa

Observed MW:

80 kDa

Purification Method:

Protein A purification

CloneNo.:

230212D5

Recommended Dilutions:

WB 1:500-1:1000

Excitation/Emission maxima
wavelengths:

755 nm / 780 nm

Applications

Tested Applications:

WB

Species Specificity:

human

Positive Controls:

WB : LO2 cells,

Storage

Storage:

Store at -20°C. Avoid exposure to light. Stable for one year after shipment.

Storage Buffer:

PBS with 50% Glycerol, 0.05% Proclin300, 0.5% BSA, pH 7.3.

Aliquoting is unnecessary for -20°C storage

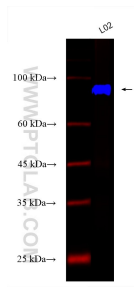
For technical support and original validation data for this product please contact:

T: 1 (888) 4PTGLAB (1-888-478-4522) (toll free
in USA), or 1(312) 455-8498 (outside USA)

E: proteintech@ptglab.com
W: ptglab.com

This product is exclusively available under Proteintech Group brand and is not available to purchase from any other manufacturer.

Selected Validation Data



Various lysates were subjected to SDS PAGE followed by western blot with CL750-82915-2 (ALPL antibody) at dilution of 1:800 incubated at room temperature for 1.5 hours.