

For Research Use Only

CoraLite® Plus 750-conjugated HLA-DMA Recombinant antibody

Catalog Number:CL750-82899-2



Basic Information

Catalog Number: CL750-82899-2	GenBank Accession Number: BC026279	Purification Method: Protein A purification
Size: 100ul , Concentration: 1000 µg/ml by Nanodrop;	GeneID (NCBI): 3108	CloneNo.: 230155E7
Source: Rabbit	UNIPROT ID: Q31604	Recommended Dilutions: WB 1:500-1:1000
Isotype: IgG	Full Name: major histocompatibility complex, class II, DM alpha	Excitation/Emission maxima wavelengths: 755 nm / 780 nm
Immunogen Catalog Number: AG2452	Calculated MW: 261 aa, 29 kDa	
	Observed MW: 30 kDa	

Applications

Tested Applications: WB	Positive Controls: WB : Raji cells, Ramos cells
Species Specificity: human	

Background Information

Human major histocompatibility complex (MHC) antigens, also referred to as human leukocyte antigens (HLA), are encoded by genes located on the short arm of chromosome 6 (6p21.3). There are two classes of HLA antigens: class I (HLA-A, B and C) and class II (HLA-D). The class II molecules are composed of two non-covalently associated alpha and beta chains. HLA-DMA and HLA-DMB form a functional heterodimer that is critical in the pathway of class II antigen presentation. HLA-DM plays a critical role in catalyzing the release of Class II HLA-associated invariant chain-derived peptides (CLIP) from newly synthesized class II HLA molecules and freeing the peptide binding site for acquisition of antigenic peptides.

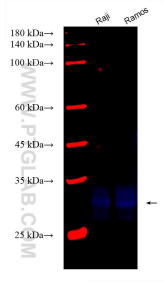
Storage

Storage:
Store at -20°C. Avoid exposure to light. Stable for one year after shipment.
Storage Buffer:
PBS with 50% Glycerol, 0.05% Proclin300, 0.5% BSA, pH 7.3.
Aliquoting is unnecessary for -20°C storage

For technical support and original validation data for this product please contact:
T: 1 (888) 4PTGLAB (1-888-478-4522) (toll free in USA), or 1(312) 455-8498 (outside USA)
E: proteintech@ptglab.com
W: ptglab.com

This product is exclusively available under Proteintech Group brand and is not available to purchase from any other manufacturer.

Selected Validation Data



Various lysates were subjected to SDS PAGE followed by western blot with CL750-82899-2 (HLA-DMA antibody) at dilution of 1:800 incubated at room temperature for 1.5 hours.