

For Research Use Only

# CoraLite® Plus 750-conjugated Emerin Recombinant antibody

Catalog Number: CL750-82888-3

Featured Product



## Basic Information

Catalog Number:

CL750-82888-3

Size:

100ul , Concentration: 1000 ug/ml by Nanodrop;

Source:

Rabbit

Isotype:

IgG

Immunogen Catalog Number:

AG0236

GenBank Accession Number:

BC000738

GeneID (NCBI):

2010

UNIPROT ID:

P50402

Full Name:

emerin

Calculated MW:

34 kDa

Observed MW:

30-35 kDa

Purification Method:

Protein A purification

CloneNo.:

230089B12

Recommended Dilutions:

WB 1:500-1:1000

Excitation/Emission maxima wavelengths:

755 nm / 780 nm

## Applications

Tested Applications:

WB, FC (Intra)

Species Specificity:

human

Positive Controls:

WB : HEK-293 cells, HeLa cells

## Background Information

Emerin (Emery-Dreifuss muscular dystrophy) (EMD or EDMD), a serine-rich nuclear membrane protein, is a member of the nuclear lamina-associated protein family. EMD may mediate membrane anchorage to the cytoskeleton by stabilizing and promoting the formation of a nuclear actin cortical network. Defects in EMD gene are the cause of Emery-Dreifuss muscular dystrophy type 1 (EDMD1), a degenerative myopathy characterized by weakness and atrophy of muscle without involvement of the nervous system, early contractures of the elbows Achilles tendons and spine, and cardiomyopathy associated with cardiac conduction defects. EMD inhibits beta-catenin activity by preventing its accumulation in the nucleus and is involved in HIV-1 infection.

## Storage

Storage:

Store at -20°C. Avoid exposure to light. Stable for one year after shipment.

Storage Buffer:

PBS with 50% Glycerol, 0.05% Proclin300, 0.5% BSA, pH 7.3.

Aliquoting is unnecessary for -20°C storage

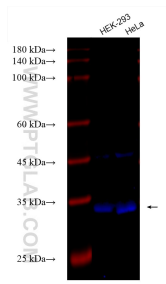
For technical support and original validation data for this product please contact:

T: 1 (888) 4PTGLAB (1-888-478-4522) (toll free in USA), or 1(312) 455-8498 (outside USA)

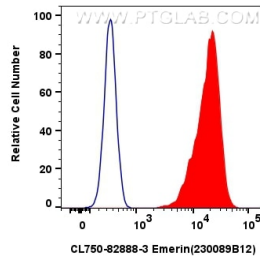
E: [proteintech@ptglab.com](mailto:proteintech@ptglab.com)  
W: [ptglab.com](http://ptglab.com)

This product is exclusively available under Proteintech Group brand and is not available to purchase from any other manufacturer.

## Selected Validation Data



Various lysates were subjected to SDS PAGE followed by western blot with CL750-82888-3 (Emerin antibody) at dilution of 1:800 incubated at room temperature for 1.5 hours.



$1 \times 10^6$  HEK-293T cells were intracellularly stained with 0.4  $\mu$ g CoraLite® Plus 750-conjugated Emerin Recombinant antibody (CL750-82888-3, Clone:230089B12)(red), or 0.4  $\mu$ g Isotype Control (CL750-30000) (blue). Cells were fixed and permeabilized with Transcription Factor Staining Buffer Kit (PF00011).