

For Research Use Only

# CoraLite® Plus 750-conjugated CHMP4B Recombinant antibody

Catalog Number:CL750-81691-2



## Basic Information

**Catalog Number:**

CL750-81691-2

**Size:**

100ul , Concentration: 1000 µg/ml by  
Nanodrop;

**Source:**

Rabbit

**Isotype:**

IgG

**Immunogen Catalog Number:**

AG4544

**GenBank Accession Number:**

BC033859

**GeneID (NCBI):**

128866

**UNIPROT ID:**

Q9H444

**Full Name:**

chromatin modifying protein 4B

**Calculated MW:**

224 aa, 25 kDa

**Observed MW:**

25 kDa

**Purification Method:**

Protein A purification

**CloneNo.:**

2N22

**Recommended Dilutions:**

WB 1:500-1:1000

**Excitation/Emission maxima  
wavelengths:**

755 nm / 780 nm

## Applications

**Tested Applications:**

WB, FC (Intra)

**Species Specificity:**

human

**Positive Controls:**

WB : Jurkat cells, HuH-7 cells

## Background Information

CHMP4B (charged multivesicular body protein 4b) is a human homologue of yeast Snf7p (also named Vps32p) and a member of CHMP family which is implicated in multivesicular body (MVB) sorting. The CHMP proteins are components of ESCRT-III (endosomal sorting complex required for transport III), a complex involved in degradation of surface receptor proteins and formation of endocytic multivesicular bodies. Among seven CHMP family members, only CHMP4 has been found to interact with Alix, a multifunctional adaptor protein in various cellular functions. This antibody is highly specific to the CHMP4B and it doesn't cross-react with other CHMPs as well as other CHMP4s (CHMP4A and CHMP4C). CHMP4B can be detected 25-33 kDa by post-translational modification (PMID:26490837).

## Storage

**Storage:**

Store at -20°C. Avoid exposure to light. Stable for one year after shipment.

**Storage Buffer:**

PBS with 50% Glycerol, 0.05% Proclin300, 0.5% BSA, pH 7.3.

Aliquoting is unnecessary for -20°C storage

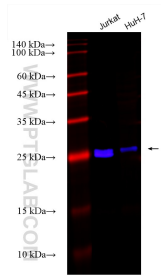
For technical support and original validation data for this product please contact:

T: 1 (888) 4PTGLAB (1-888-478-4522) (toll free  
in USA), or 1(312) 455-8498 (outside USA)

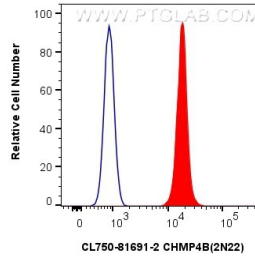
E: [proteintech@ptglab.com](mailto:proteintech@ptglab.com)  
W: [ptglab.com](http://ptglab.com)

**This product is exclusively available under Proteintech Group brand and is not available to purchase from any other manufacturer.**

## Selected Validation Data



Various lysates were subjected to SDS PAGE followed by western blot with CL750-81691-2 (CHMP4B antibody) at dilution of 1:800 incubated at room temperature for 1.5 hours.



1x10<sup>6</sup> HepG2 cells were intracellularly stained with 0.4 ug Coralite® Plus 750-conjugated CHMP4B Recombinant antibody (CL750-81691-2, Clone:2N22)(red), or 0.4 ug Isotype Control (CL750-30000) (blue). Cells were fixed with 4% PFA and permeabilized with Flow Cytometry Perm Buffer (PF00011-C).