

For Research Use Only

CoraLite® Plus 750-conjugated KGA/GAC Recombinant antibody

Catalog Number:CL750-81486

Featured Product



Basic Information

Catalog Number:

CL750-81486

Size:

100ul , Concentration: 1000 ug/ml by
Nanodrop;

Source:

Rabbit

Isotype:

IgG

Immunogen Catalog Number:

AG3505

GenBank Accession Number:

BC038507

GeneID (NCBI):

2744

UNIPROT ID:

O94925

Full Name:

glutaminase

Calculated MW:

669 aa, 73 kDa

Observed MW:

58 kDa, 65 kDa

Purification Method:

Protein A purification

CloneNo.:

4C20

Recommended Dilutions:

WB 1:500-1:1000

**Excitation/Emission maxima
wavelengths:**

755 nm / 780 nm

Applications

Tested Applications:

WB, FC (Intra)

Species Specificity:

human, mouse, rat

Positive Controls:

WB : COLO 320 cells, mouse brain tissue

Background Information

GLS, also named as GLS1 and KIAA0838, belongs to the glutaminase family. It catalyzes the first reaction in the primary pathway for the renal catabolism of glutamine. Glutaminase-, glutamate-, and taurine-immunoreactive neurons develop neurofibrillary tangles in Alzheimer's disease(PMID:1672808). The glutaminase band in AA/C1 cells is more intense than in HT29 cells, in accordance with measurements of glutaminase activity, and had the same molecular mass of approx. 63 kDa. The bands for both cell lines are clearly different in size from both rat liver glutaminase (58 kDa) and rat kidney glutaminase (65 kDa)(PMID:12408749). It also reveals a molecular weight of 83-84 kDa as a phosphate-dependent glutaminase(PMID:447624;7512428). It has 3 isoforms named as KGA, GAM, GAC. This antibody can recognize KGA and GAC.

Storage

Storage:

Store at -20°C. Avoid exposure to light. Stable for one year after shipment.

Storage Buffer:

PBS with 50% Glycerol, 0.05% Proclin300, 0.5% BSA, pH 7.3.

Aliquoting is unnecessary for -20°C storage

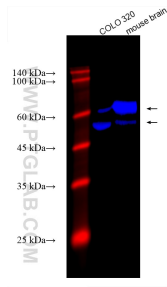
For technical support and original validation data for this product please contact:

T: 1 (888) 4PTGLAB (1-888-478-4522) (toll free
in USA), or 1(312) 455-8498 (outside USA)

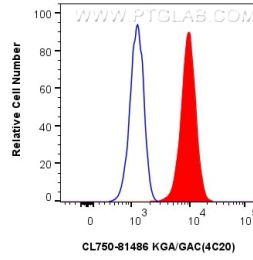
E: proteintech@ptglab.com
W: ptglab.com

This product is exclusively available under Proteintech Group brand and is not available to purchase from any other manufacturer.

Selected Validation Data



Various lysates were subjected to SDS PAGE followed by western blot with CL750-81486 (GLS antibody) at dilution of 1:500 incubated at room temperature for 1.5 hours.



1x10⁶ HeLa cells were intracellularly stained with 0.4 ug CoraLite® Plus 750-conjugated KGA/GAC Recombinant antibody (CL750-81486, Clone:4C20) (red), or 0.4 ug Isotype Control (CL750-30000) (blue). Cells were fixed with 4% PFA and permeabilized with Flow Cytometry Perm Buffer (PF00011-C).