

For Research Use Only

CoraLite® Plus 750-conjugated EEA1 Recombinant antibody



Catalog Number: CL750-81245

Basic Information

Catalog Number: CL750-81245	GenBank Accession Number: NM_003566	Purification Method: Protein A purification
Size: 100ul , Concentration: 1000 µg/ml by Nanodrop;	GeneID (NCBI): 8411	CloneNo.: 2C11
Source: Rabbit	UNIPROT ID: Q15075	Recommended Dilutions: WB 1:1000-1:4000
Isotype: IgG	Full Name: early endosome antigen 1	Excitation/Emission maxima wavelengths: 755 nm / 780 nm
Immunogen Catalog Number: AG28814	Calculated MW: 162 kDa	
	Observed MW: 162 kDa	

Applications

Tested Applications: WB	Positive Controls: WB : HSC-T6 cells, HeLa cells, HepG2 cells
Species Specificity: human, mouse, rat	

Background Information

Early endosome antigen 1 (EEA1) is a marker of early endosomes and has an important role in endosomal trafficking. EEA1 contains coiled-coil regions and an FYVE-type zinc finger which interacts with phosphatidylinositol-3-phosphate. EEA1 functions as a Rab5 effector, mediates endosome docking and, together with SNAREs, leads to membrane fusion.

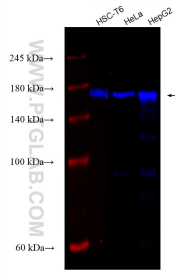
Storage

Storage:
Store at -20°C. Avoid exposure to light. Stable for one year after shipment.
Storage Buffer:
PBS with 50% Glycerol, 0.05% Proclin300, 0.5% BSA, pH 7.3.
Aliquoting is unnecessary for -20°C storage

For technical support and original validation data for this product please contact:
T: 1 (888) 4PTGLAB (1-888-478-4522) (toll free in USA), or 1(312) 455-8498 (outside USA)
E: proteintech@ptglab.com
W: ptglab.com

This product is exclusively available under Proteintech Group brand and is not available to purchase from any other manufacturer.

Selected Validation Data



Various lysates were subjected to SDS PAGE followed by western blot with CL750-81245 (EEA1 antibody) at dilution of 1:2000 incubated at room temperature for 1.5 hours.