

For Research Use Only

# CoraLite® Plus 750-conjugated IDH1 Recombinant antibody

Catalog Number:CL750-81176



## Basic Information

<b>Catalog Number:</b> CL750-81176	<b>GenBank Accession Number:</b> BC012846	<b>Purification Method:</b> Protein A purification
<b>Size:</b> 100ul , Concentration: 1000 ug/ml by Nanodrop;	<b>GeneID (NCBI):</b> 3417	<b>CloneNo.:</b> 6L18
<b>Source:</b> Rabbit	<b>UNIPROT ID:</b> O75874	<b>Recommended Dilutions:</b> WB 1:1000-1:4000
<b>Isotype:</b> IgG	<b>Full Name:</b> isocitrate dehydrogenase 1 (NADP+), soluble	<b>Excitation/Emission maxima wavelengths:</b> 755 nm / 780 nm
<b>Immunogen Catalog Number:</b> AG19749	<b>Calculated MW:</b> 414 aa, 47 kDa	
	<b>Observed MW:</b> 46 kDa	

## Applications

**Tested Applications:**  
WB, FC (Intra)

**Species Specificity:**  
human, mouse, rat

**Positive Controls:**

WB : mouse liver tissue, rat liver tissue, LNCaP cells

## Background Information

IDH1, also named as PICD and IDP, belongs to the isocitrate and isopropylmalate dehydrogenases family. It is a common feature of a major subset of primary human brain cancers. It can form a homodimer(PMID:15173171). IDH1 mutation is always heterozygotic and IDH1 functions as a dimer, theoretically there will be 25% each wild type and mutant homo-dimers and 50% hetero-dimers present in the tumor cells(PMID:21079649).

## Storage

**Storage:**  
Store at -20°C. Avoid exposure to light. Stable for one year after shipment.

**Storage Buffer:**  
PBS with 50% Glycerol, 0.05% Proclin300, 0.5% BSA, pH 7.3.

Aliquoting is unnecessary for -20°C storage

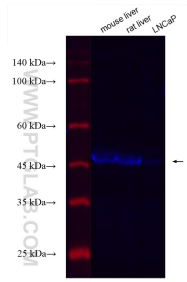
For technical support and original validation data for this product please contact:

T: 1 (888) 4PTGLAB (1-888-478-4522) (toll free  
in USA), or 1(312) 455-8498 (outside USA)

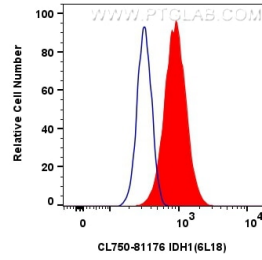
E: proteintech@ptglab.com  
W: ptglab.com

This product is exclusively available under Proteintech Group brand and is not available to purchase from any other manufacturer.

## Selected Validation Data



Various lysates were subjected to SDS PAGE followed by western blot with CL750-81176 (IDH1 antibody) at dilution of 1:2000 incubated at room temperature for 1.5 hours.



1x10<sup>6</sup> HepG2 cells were intracellularly stained with 0.4 ug CoraLite® Plus 750-conjugated IDH1 Recombinant antibody (CL750-81176, Clone:6L18) (red), or 0.4 ug Isotype Control (blue). Cells were fixed with 4% PFA and permeabilized with Flow Cytometry Perm Buffer (PF00011-C).