

For Research Use Only

CoraLite® Plus 750-conjugated STIM1 Recombinant antibody

Catalog Number:CL750-81156



Basic Information

Catalog Number: CL750-81156	GenBank Accession Number: BC021300	Purification Method: Protein A purification
Size: 100ul , Concentration: 1000 ug/ml by Nanodrop;	GeneID (NCBI): 6786	CloneNo.: 1B13
Source: Rabbit	UNIPROT ID: Q13586	Recommended Dilutions: WB 1:500-1:2000
Isotype: IgG	Full Name: stromal interaction molecule 1	Excitation/Emission maxima wavelengths: 755 nm / 780 nm
Immunogen Catalog Number: AG2140	Calculated MW: 685 aa, 77 kDa	
	Observed MW: 77 kDa	

Applications

Tested Applications: WB	Positive Controls: WB : NIH/3T3 cells, RAW 264.7 cells, HSC-T6 cells
Species Specificity: Human, mouse, rat	

Background Information

STIM1, also named as GOK, is an ER Ca²⁺ sensor. Upon Ca²⁺ store depletion, STIM1 clusters at ER-plasma membrane junctions where it interacts with and gates Ca²⁺-permeable Orai1 ion channels. STIM1 is implicated in tumor growth suppression and stromal-haematopoietic cell interactions. Defects in STIM1 gene can cause immune dysfunction with impaired T-cell activation. STIM1 can inhibit L-type voltage-gated Ca(2+) channels in neurons. Temperature is an important regulator of STIM1 function.

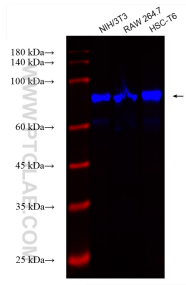
Storage

Storage:
Store at -20°C. Avoid exposure to light. Stable for one year after shipment.
Storage Buffer:
PBS with 50% Glycerol, 0.05% Proclin300, 0.5% BSA, pH 7.3.
Aliquoting is unnecessary for -20°C storage

For technical support and original validation data for this product please contact:
T: 1 (888) 4PTGLAB (1-888-478-4522) (toll free in USA), or 1(312) 455-8498 (outside USA)
E: proteintech@ptglab.com
W: ptglab.com

This product is exclusively available under Proteintech Group brand and is not available to purchase from any other manufacturer.

Selected Validation Data



Various lysates were subjected to SDS PAGE followed by western blot with CL750-81156 (STIM1 antibody) at dilution of 1:1000 incubated at room temperature for 1.5 hours.