

For Research Use Only

CoraLite® Plus 750-conjugated Beta Actin Recombinant antibody



Catalog Number:CL750-81115

Basic Information

Catalog Number: CL750-81115	GenBank Accession Number: BC002409	Purification Method: Protein A purification
Size: 100ul , Concentration: 1000 µg/ml by Nanodrop;	GeneID (NCBI): 60	CloneNo.: 4H1
Source: Rabbit	Full Name: actin, beta	Recommended Dilutions: WB 1:1000-1:8000
Isotype: IgG	Calculated MW: 375 aa, 42 kDa	Excitation/Emission maxima wavelengths: 755 nm / 780 nm
Immunogen Catalog Number: AG14521	Observed MW: 42 kDa	

Applications

Tested Applications:

WB

Species Specificity:

Human, pig, rat, mouse

Positive Controls:

WB : HeLa cells, mouse brain tissue, rat brain tissue

Background Information

Beta Actin, also named as ACTB and F-Actin, belongs to the actin family. Actins are highly conserved globular proteins that are involved in various types of cell motility and are ubiquitously expressed in all eukaryotic cells. At least six isoforms of actins are known in mammals and other vertebrates: alpha (ACTC1, cardiac muscle 1), alpha 1 (ACTA1, skeletal muscle) and 2 (ACTA2, aortic smooth muscle), beta (ACTB), gamma 1 (ACTG1) and 2 (ACTG2, enteric smooth muscle). Beta and gamma 1 are two non-muscle actin proteins. Most actins consist of 376aa, while ACTG2 (rich in muscles) has 375aa and ACTG1(found in non-muscle cells) has only 374aa. Beta actin has been widely used as the internal control in RT-PCR and Western Blotting as a 42-kDa protein. However, the 37-40, 31, 15 kDa cleaved fragment of beta actin can be generated during apoptosis process. This antibody was generated against N-terminal region of human beta actin protein and can cross-react with other actins. (9173887, 11217076, 10229193)

Storage

Storage:

Store at -20°C. Avoid exposure to light. Stable for one year after shipment.

Storage Buffer:

PBS with 50% Glycerol, 0.05% Proclin300, 0.5% BSA, pH 7.3.

Aliquoting is unnecessary for -20°C storage

*** 20ul sizes contain 0.1% BSA

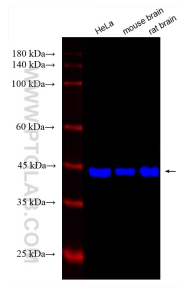
For technical support and original validation data for this product please contact:

T: 1 (888) 4PTGLAB (1-888-478-4522) (toll free in USA), or 1(312) 455-8498 (outside USA)

E: proteintech@ptglab.com
W: ptglab.com

This product is exclusively available under Proteintech Group brand and is not available to purchase from any other manufacturer.

Selected Validation Data



Various lysates were subjected to SDS PAGE followed by western blot with CL750-81115 (Beta Actin antibody) at dilution of 1:4000 incubated at room temperature for 1.5 hours.