

For Research Use Only

CoraLite® Plus 750-conjugated AFP Recombinant antibody

Catalog Number: CL750-81083

Featured Product



Basic Information

Catalog Number:

CL750-81083

Size:

100ul, Concentration: 1000 ug/ml by
Nanodrop;

Source:

Rabbit

Isotype:

IgG

Immunogen Catalog Number:

AG6089

GenBank Accession Number:

BC027881

GeneID (NCBI):

174

UNIPROT ID:

P02771

Full Name:

alpha-fetoprotein

Calculated MW:

69 kDa

Observed MW:

68-72 kDa

Purification Method:

Protein A purification

CloneNo.:

2D17

Recommended Dilutions:

WB 1:500-1:1000

Excitation/Emission maxima
wavelengths:

755 nm / 780 nm

Applications

Tested Applications:

WB

Species Specificity:

Human

Positive Controls:

WB : HepG2 cells, HuH-7 cells

Background Information

AFP, also known as Alpha-fetoprotein, is a major plasma protein in the fetus and its concentration is very low in the adult (PubMed:24120489). AFP is considered a marker of hepatocyte precursors. AFP can be detected at abnormally high concentrations in hepatocellular carcinomas as well as in the plasma and ascitic fluid of adults with hepatoma. High AFP concentrations have been correlated with tumor cell growth, indicating that AFP can serve as a tumor marker (PubMed: 18669658).

Storage

Storage:

Store at -20°C. Avoid exposure to light. Stable for one year after shipment.

Storage Buffer:

PBS with 50% Glycerol, 0.05% Proclin300, 0.5% BSA, pH 7.3.

Aliquoting is unnecessary for -20°C storage

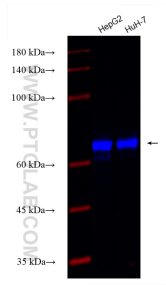
For technical support and original validation data for this product please contact:

T: 1 (888) 4PTGLAB (1-888-478-4522) (toll free
in USA), or 1(312) 455-8498 (outside USA)

E: proteintech@ptglab.com
W: ptglab.com

This product is exclusively available under Proteintech Group brand and is not available to purchase from any other manufacturer.

Selected Validation Data



Various lysates were subjected to SDS PAGE followed by western blot with CL750-81083 (AFP antibody) at dilution of 1:800 incubated at room temperature for 1.5 hours.