

For Research Use Only

# CoraLite® Plus 750-conjugated Beta Actin Monoclonal antibody



Catalog Number: CL750-66009

Featured Product

## Basic Information

<b>Catalog Number:</b> CL750-66009	<b>GenBank Accession Number:</b> NM_001101	<b>Purification Method:</b> Protein A purification
<b>Size:</b> 100ul , Concentration: 1000 µg/ml by Nanodrop;	<b>GeneID (NCBI):</b> 60	<b>CloneNo.:</b> 2D4H5
<b>Source:</b> Mouse	<b>Full Name:</b> actin, beta	<b>Recommended Dilutions:</b> WB 1:500-1:2000
<b>Isotype:</b> IgG2b	<b>Calculated MW:</b> 42 kDa	<b>Excitation/Emission maxima wavelengths:</b> 755 nm / 780 nm
	<b>Observed MW:</b> 42 kDa	

## Applications

**Tested Applications:**  
WB

**Species Specificity:**  
human, mouse, rat

**Positive Controls:**

**WB :** mouse kidney tissue, mouse brain tissue, HeLa cells, NIH/3T3 cells, HSC-T6 cells, Jurkat cells

## Background Information

Actins are highly conserved globular proteins that are involved in various types of cell motility and are ubiquitously expressed in all eukaryotic cells. At least six isoforms of actins are known in mammals and other vertebrates: alpha (ACTC1, cardiac muscle 1), alpha 1 (ACTA1, skeletal muscle) and 2 (ACTA2, aortic smooth muscle), beta (ACTB), gamma 1 (ACTG1) and 2 (ACTG2, enteric smooth muscle). Beta and gamma 1 are two non-muscle actin proteins. Most actins consist of 376aa, while ACTG2 (rich in muscles) has 375aa and ACTG1(found in non-muscle cells) has only 374aa. Beta actin has been widely used as the internal control in RT-PCR and Western Blotting as a 42-kDa protein. However, the 41 kDa cleaved fragment of beta actin can be generated during apoptosis process. This antibody can recognize all the actins. The isotype of this antibody is IgG2b. For murine tissue sample, conjugated antibody (HRP-66009) or rabbit antibody (20536-1-AP) is preferable.

## Storage

**Storage:**

Store at -20°C. Avoid exposure to light. Stable for one year after shipment.

**Storage Buffer:**

PBS with 50% Glycerol, 0.05% Proclin300, 0.5% BSA, pH 7.3.

Aliquoting is unnecessary for -20°C storage

\*\*\* 20ul sizes contain 0.1% BSA

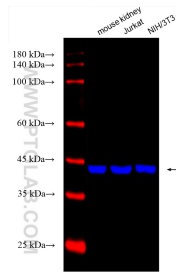
For technical support and original validation data for this product please contact:

T: 1 (888) 4PTGLAB (1-888-478-4522) (toll free in USA), or 1(312) 455-8498 (outside USA)

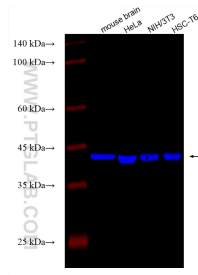
E: proteintech@ptglab.com  
W: ptglab.com

This product is exclusively available under Proteintech Group brand and is not available to purchase from any other manufacturer.

## Selected Validation Data



Various lysates were subjected to SDS PAGE followed by western blot with CL750-66009 (Beta Actin antibody) at dilution of 1:1000 incubated at room temperature for 1.5 hours.



Various lysates were subjected to SDS PAGE followed by western blot with CL750-66009 (Beta Actin antibody) at dilution of 1:2000 incubated at room temperature for 1.5 hours.