

For Research Use Only

# CoraLite® Plus 750 Anti-Human CD13 (WM15) Mouse IgG2a Recombinant Antibody

Catalog Number: CL750-65633



## Basic Information

Catalog Number:

CL750-65633

Size:

100 tests, 5 ul/test

Source:

Mouse

Isotype:

IgG2a

GenBank Accession Number:

BC058928

GeneID (NCBI):

290

ENSEMBL Gene ID:

ENSG00000166825

Full Name:

alanyl (membrane) aminopeptidase

Calculated MW:

110 kDa

Purification Method:

Protein A purification

CloneNo.:

WM15

Excitation/Emission maxima wavelengths:

755 nm / 780 nm

## Applications

Tested Applications:

FC

Species Specificity:

human

## Background Information

CD13, also named as APN, ANPEP (aminopeptidase N) or PEPN, is belongs to the peptidase M1 family. CD13 is a heavily glycosylated, ~150-240 kDa, type-II membrane, expressed by most cells of myeloid origin including monocytes, macrophages, granulocytes, and their hematopoietic precursors. It is also abundantly expressed in the brush border of epithelial cells from renal proximal tubules and small intestine, in prostatic epithelial cells, in bile duct canaliculi, in mast cells, and, in some cases, in fibroblasts and smooth muscle cells. CD13 is a multifunctional protein and plays varying roles in cell migration, cell proliferation, cell differentiation and so on. CD13 participates in angiogenesis generating and modulating angiogenic signals, and can be a marker of angiogenic vessels. CD13 is also a pan-myeloid marker, present on mature granulocytes and monocytes. (PMID: 8805662, 10098327, 18603472, 18097955, 17897790, 17888402, 21339174)

## Storage

Storage:

Store at 2-8°C. Avoid exposure to light. Stable for one year after shipment.

Storage Buffer:

PBS with 0.09% sodium azide and 0.5% BSA.

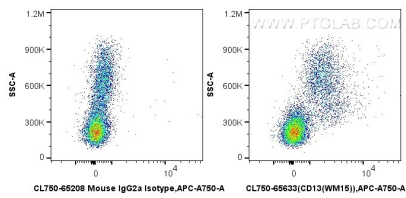
For technical support and original validation data for this product please contact:

T: 1 (888) 4PTGLAB (1-888-478-4522) (toll free in USA), or 1(312) 455-8498 (outside USA)

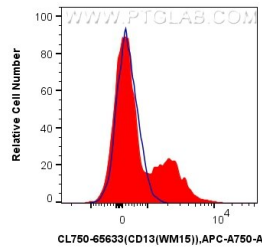
E: [proteintech@ptglab.com](mailto:proteintech@ptglab.com)  
W: [ptglab.com](http://ptglab.com)

This product is exclusively available under Proteintech Group brand and is not available to purchase from any other manufacturer.

## Selected Validation Data



1x10<sup>6</sup> human PBMCs were surface stained with 5 ul CoraLite® Plus 750 Anti-Human CD13 (WM15) Mouse IgG2a RecAb (CL750-65633, Clone: WM15) or CoraLite® Plus 750 Mouse IgG2a Isotype Control (C1.18.4) (CL750-65208, Clone: C1.18.4). Cells were incubated with FC Receptor Block prior to staining. Cells were not fixed.



1x10<sup>6</sup> human PBMCs were surface stained with 5 ul CoraLite® Plus 750 Anti-Human CD13 (WM15) Mouse IgG2a RecAb (CL750-65633, Clone: WM15) (red) or CoraLite® Plus 750 Mouse IgG2a Isotype Control (C1.18.4) (CL750-65208, Clone: C1.18.4) (blue). Cells were incubated with FC Receptor Block prior to staining. Cells were not fixed.