

For Research Use Only

# CoraLite® Plus 750 Anti-Human CD35 (E11) Mouse IgG2a Recombinant Antibody

Catalog Number: CL750-65622



## Basic Information

Catalog Number:

CL750-65622

Size:

100tests , 5 ul/test

Source:

Mouse

Isotype:

IgG2a

GenBank Accession Number:

NM\_000573

GeneID (NCBI):

1378

ENSEMBL Gene ID:

ENSG00000203710

Full Name:

complement component (3b/4b) receptor 1 (Knops blood group)

Calculated MW:

224 kDa

Purification Method:

Protein A purification

CloneNo.:

E11

Excitation/Emission maxima wavelengths:

755 nm / 780 nm

## Applications

Tested Applications:

FC

Species Specificity:

human

## Background Information

CD35, also known as complement receptor type 1 (CR1) or C3b/C4b receptor, is a single-chain glycoprotein consisting of 30 repeating homologous protein domains known as short consensus repeats (~60 amino acids each) followed by transmembrane and cytoplasmic domains (PMID: 8765013). CD35 is variably expressed by granulocytes, monocytes, B cells, some T cells, erythrocytes, follicular dendritic cells, Langerhans cells, and glomerular podocytes (PMID: 19004497). CD35 acts as a receptor for C3b and C4b and plays important roles in the regulation of the complement cascade and clearance of immune complexes.

## Storage

Storage:

Store at 2-8°C. Avoid exposure to light. Stable for one year after shipment.

Storage Buffer:

PBS with 0.09% sodium azide and 0.5% BSA.

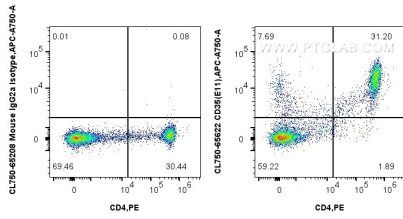
For technical support and original validation data for this product please contact:

T: 1 (888) 4PTGLAB (1-888-478-4522) (toll free in USA), or 1(312) 455-8498 (outside USA)

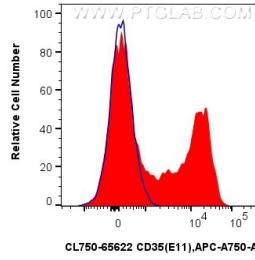
E: [proteintech@ptglab.com](mailto:proteintech@ptglab.com)  
W: [ptglab.com](http://ptglab.com)

This product is exclusively available under Proteintech Group brand and is not available to purchase from any other manufacturer.

## Selected Validation Data



1x10<sup>6</sup> human PBMCs were surface stained with PE Anti-Human CD14 Rabbit Recombinant Antibody (PE-98040, Clone: 230332D7) and 5 ul CoraLite® Plus 750 Anti-Human CD35 (E11) Mouse IgG2a RecAb (CL750-65622, Clone:E11), or CoraLite® Plus 750 Mouse IgG2a Isotype Control (C1.18.4) (CL750-65208, Clone: C1.18.4). Cells were incubated with FC Receptor Block prior to staining. Cells were not fixed.



1x10<sup>6</sup> human PBMCs were surface stained with 5 ul CoraLite® Plus 750 Anti-Human CD35 (E11) Mouse IgG2a RecAb (CL750-65622, Clone: E11) (red), or CoraLite® Plus 750 Mouse IgG2a Isotype Control (C1.18.4) (CL750-65208, Clone: C1.18.4) (blue). Cells were incubated with FC Receptor Block prior to staining. Cells were not fixed.