

For Research Use Only

CoraLite® Plus 750 Anti-Human CD62P (AK4) Mouse IgG2a Recombinant Antibody

Catalog Number: CL750-65587



Basic Information

Catalog Number: CL750-65587	GenBank Accession Number: BC028067	Purification Method: Protein A purification
Size: 100tests , 5 ul/test	GeneID (NCBI): 6403	CloneNo.: AK4
Source: Mouse	Full Name: selectin P (granule membrane protein	Excitation/Emission maxima
Isotype: IgG2a	140kDa, antigen CD62)	wavelengths: 755 nm / 780 nm
	Calculated MW: 830 aa, 91 kDa	

Applications

Tested Applications:
FC

Species Specificity:
human

Background Information

P-selectin, also known as GMP140 or CD62P, is a transmembrane glycoprotein that mediates the interaction of activated endothelial cells or platelets with leukocytes. It is an adhesion molecule involved in the pathogenesis of inflammation, thrombosis, and oncogenesis. P-selectin is stored in the alpha-granules of platelets and Weibel-Palade bodies of endothelial cells. Upon cell activation by agonists, P-selectin is transported rapidly to the cell surface.

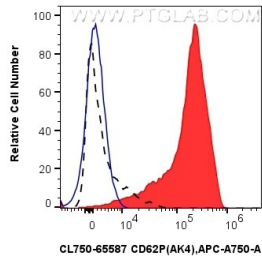
Storage

Storage:
Store at 2-8°C. Avoid exposure to light. Stable for one year after shipment.
Storage Buffer:
PBS with 0.09% sodium azide and 0.5% BSA.

For technical support and original validation data for this product please contact:
T: 1 (888) 4PTGLAB (1-888-478-4522) (toll free in USA), or 1(312) 455-8498 (outside USA) E: proteintech@ptglab.com
W: ptglab.com

This product is exclusively available under Proteintech Group brand and is not available to purchase from any other manufacturer.

Selected Validation Data



1x10⁶ thrombin treated human peripheral blood platelets were surface stained with 5 ul CoraLite® Plus 750 Anti-Human CD62P (AK4) Mouse IgG2a Recombinant Antibody (CL750-65587, Clone: AK4) (red), or CoraLite® Plus 750 Mouse IgG2a Isotype Control (C.1.18.4) (CL750-65208, Clone: C.1.18.4) (blue). 1x10⁶ untreated human peripheral blood platelets were surface stained with 5 ul CoraLite® Plus 750 Anti-Human CD62P (AK4) Mouse IgG2a Recombinant Antibody (CL750-65587, Clone:

