

For Research Use Only

CoraLite® Plus 750 Anti-Human CD68 (Y1/82A)



Catalog Number:CL750-65187

Basic Information

Catalog Number: CL750-65187	GenBank Accession Number: BC015557	Purification Method: Purified by protein-A affinity chromatography
Size: 100tests , 5 µl/test	GeneID (NCBI): 968	CloneNo.: Y1/82A
Source: Mouse	Full Name: CD68 molecule	Excitation/Emission maxima wavelengths: 755 nm / 780 nm
Isotype: IgG2b, kappa	Calculated MW: 37 kDa	

Applications

Tested Applications:
FC (Intra)

Species Specificity:
Human

Background Information

CD68 is a type I transmembrane glycoprotein that is highly expressed by human monocytes and tissue macrophages. It belongs to the lysosomal/endosomal-associated membrane glycoprotein (LAMP) family and primarily localizes to lysosomes and endosomes with a smaller fraction circulating to the cell surface. CD68 is also a member of the scavenger receptor family. It may play a role in phagocytic activities of tissue macrophages.

Storage

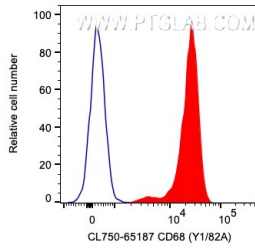
Storage:
Store at 2-8°C. Avoid exposure to light. Stable for one year after shipment.

Storage Buffer:
PBS with 0.09% sodium azide and 0.5% BSA.

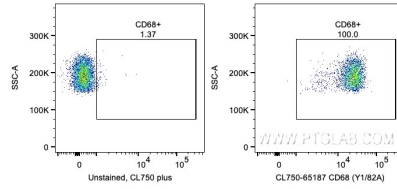
For technical support and original validation data for this product please contact:
T: 1 (888) 4PTGLAB (1-888-478-4522) (toll free in USA), or 1(312) 455-8498 (outside USA) E: proteintech@ptglab.com W: ptglab.com

This product is exclusively available under Proteintech Group brand and is not available to purchase from any other manufacturer.

Selected Validation Data



1×10^6 human PBMCs were intracellularly stained with 5 μ l CoraLite® Plus 750 Anti-Human CD68 (CL750-65187, Clone: Y1/82A) or unstained. Cells were fixed with 4% PFA and permeabilized with Flow Cytometry Perm Buffer (PF00011-C). Monocytes were gated.



1×10^6 human PBMCs were intracellularly stained with 5 μ l CoraLite® Plus 750 Anti-Human CD68 (CL750-65187, Clone: Y1/82A) or unstained. Cells were fixed with 4% PFA and permeabilized with Flow Cytometry Perm Buffer (PF00011-C). Monocytes were gated.