

For Research Use Only

# CoraLite® Plus 750 Anti-Human CD235a (HIR2)



Catalog Number: CL750-65174

## Basic Information

Catalog Number:

CL750-65174

Size:

100 tests, 5 µl/test

Source:

Mouse

Isotype:

IgG2b, kappa

GenBank Accession Number:

BC005319

GeneID (NCBI):

2993

UNIPROT ID:

P02724

Full Name:

glycophorin A (MNS blood group)

Calculated MW:

150 aa, 16 kDa

Purification Method:

Affinity purification

CloneNo.:

HIR2

Excitation/Emission maxima wavelengths:

755 nm / 780 nm

## Applications

Tested Applications:

FC

Species Specificity:

Human

## Background Information

Glycophorin A (GYPA) is the major transmembrane sialoglycoprotein in erythrocytes. It is a dimeric type I transmembrane protein carrying 15 closely clustered O-linked tetrasaccharides capped with sialic acid/N-acetylneuraminic acid (Neu5Ac). This 36 kDa protein represents the major sialoglycoprotein of the red blood cell membrane displaying about one million copies per cell. (PMID: 9490702)

## Storage

Storage:

Store at 2-8°C. Avoid exposure to light. Stable for one year after shipment.

Storage Buffer:

PBS with 0.09% sodium azide and 0.5% BSA.

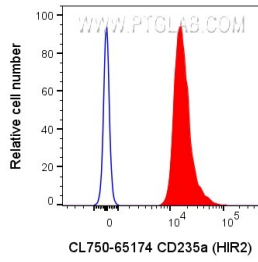
For technical support and original validation data for this product please contact:

T: 1 (888) 4PTGLAB (1-888-478-4522) (toll free in USA), or 1(312) 455-8498 (outside USA)

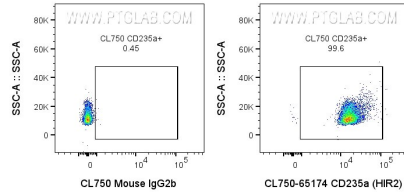
E: [proteintech@ptglab.com](mailto:proteintech@ptglab.com)  
W: [ptglab.com](http://ptglab.com)

This product is exclusively available under Proteintech Group brand and is not available to purchase from any other manufacturer.

## Selected Validation Data



10 ul human whole blood was surface stained with 5 ul CoraLite® Plus 750 Anti-Human CD235a (HIR2) (CL750-65174) or CoraLite® Plus 750 Mouse IgG2b Isotype Control. Cells were not fixed. Red blood cells were gated.



10 ul human whole blood was surface stained with 5 ul CoraLite® Plus 750 Anti-Human CD235a (HIR2) (CL750-65174) or CoraLite® Plus 750 Mouse IgG2b Isotype Control. Cells were not fixed. Red blood cells were gated.