

For Research Use Only

# CoraLite® Plus 750-conjugated SECTM1 Monoclonal antibody

Catalog Number:CL750-60281



## Basic Information

<b>Catalog Number:</b> CL750-60281	<b>GenBank Accession Number:</b> BC017716	<b>Purification Method:</b> Thiophilic affinity chromatograph
<b>Size:</b> 100ul , Concentration: 1000 µg/ml by Nanodrop;	<b>GeneID (NCBI):</b> 6398	<b>CloneNo.:</b> 1C11B4
<b>Source:</b> Mouse	<b>UNIPROT ID:</b> Q8WVN6	<b>Recommended Dilutions:</b> WB 1:500-1:1000
<b>Isotype:</b> IgM	<b>Full Name:</b> secreted and transmembrane 1	<b>Excitation/Emission maxima wavelengths:</b> 755 nm / 780 nm
<b>Immunogen Catalog Number:</b> AG14645	<b>Calculated MW:</b> 248 aa, 27 kDa	
	<b>Observed MW:</b> 27 kDa	

## Applications

<b>Tested Applications:</b> WB	<b>Positive Controls:</b> WB : K-562 cells,
<b>Species Specificity:</b> human	

## Background Information

SECTM1, also named as protein K12, is originally identified by its location just upstream of the CD7 locus. It has been proposed as a ligand for CD7. SECTM1 is involved in thymocyte signaling. This antibody is specific to SECTM1.

## Storage

**Storage:**  
Store at -20°C. Avoid exposure to light. Stable for one year after shipment.  
**Storage Buffer:**  
PBS with 50% Glycerol, 0.05% Proclin300, 0.5% BSA, pH 7.3.  
Aliquoting is unnecessary for -20°C storage

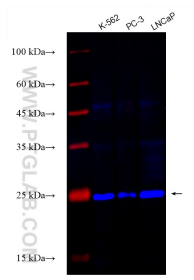
For technical support and original validation data for this product please contact:

T: 1 (888) 4PTGLAB (1-888-478-4522) (toll free  
in USA), or 1(312) 455-8498 (outside USA)

E: [proteintech@ptglab.com](mailto:proteintech@ptglab.com)  
W: [ptglab.com](http://ptglab.com)

**This product is exclusively available under Proteintech  
Group brand and is not available to purchase from any  
other manufacturer.**

## Selected Validation Data



Various lysates were subjected to SDS PAGE followed by western blot with CL750-60281 (SECTM1 antibody) at dilution of 1:500 incubated at room temperature for 1.5 hours.