

For Research Use Only

CoraLite® Plus 750-conjugated Rabbit IgG control Polyclonal antibody

Catalog Number:CL750-30000



Basic Information

Catalog Number:

CL750-30000

GenBank Accession Number:

GeneID (NCBI):

Size:

100ul , Concentration: 1000 µg/ml by Nanodrop;

Full Name:

Purification Method:

Antigen affinity purification

Source:

Rabbit

Excitation/Emission maxima wavelengths:

755 nm / 780 nm

Isotype:

IgG

Applications

Tested Applications:

FC (Intra)

Species Specificity:

n/a

Background Information

This product is Normal rabbit IgG (without immunized) which purified with Protein A. Normal Rabbit IgG is an isotype control antibody, which is used to estimate the non-specific binding of target primary antibodies due to Fc receptor binding or other protein-protein interactions. An isotype control antibody should have the same immunoglobulin type and be used at the same concentration as the test antibody.

Storage

Storage:

Store at -20°C. Avoid exposure to light. Stable for one year after shipment.

Storage Buffer:

PBS with 50% Glycerol, 0.05% Proclin300, 0.5% BSA, pH 7.3.

Aliquoting is unnecessary for -20°C storage

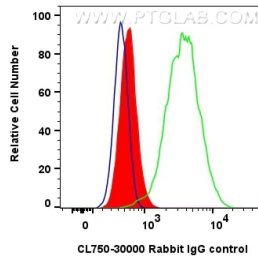
For technical support and original validation data for this product please contact:

T: 1 (888) 4PTGLAB (1-888-478-4522) (toll free in USA), or 1(312) 455-8498 (outside USA)

E: proteintech@ptglab.com
W: ptglab.com

This product is exclusively available under Proteintech Group brand and is not available to purchase from any other manufacturer.

Selected Validation Data



1x10⁶ HepG2 cells were intracellularly stained with 0.2 ug CoraLite® Plus 750-conjugated Rabbit IgG control Polyclonal antibody (CL750-30000) (red), or 0.2 ug Isotype Control (blue). Cells were fixed with 4% PFA and permeabilized with Flow Cytometry Perm Buffer (PF00011-C).