

For Research Use Only

CoraLite® Plus 647 Anti-Human IL-23R Rabbit Recombinant Antibody

Catalog Number: CL647-98180



Basic Information

Catalog Number:

CL647-98180

Size:

100 tests, 5 ul/test

Source:

Rabbit

Isotype:

IgG

GenBank Accession Number:

NM_144701.3

GeneID (NCBI):

149233

UNIPROT ID:

Q5VWK5-1

Full Name:

interleukin 23 receptor

Calculated MW:

72 kDa

Purification Method:

Protein A purification

CloneNo.:

240905B5

Excitation/Emission maxima wavelengths:

654 nm / 674 nm

Applications

Tested Applications:

FC

Species Specificity:

human

Background Information

Interleukin-23 receptor (IL-23R) is a type I cytokine receptor that plays a critical role in immune responses and inflammation. It forms a receptor complex with IL-12R β 1 and is activated by the cytokine IL-23, which is primarily produced by dendritic cells and activated macrophages (PMID: 39796684). The genetic and epigenetic interactions in the IL-23R/IL-17 axis are associated with elevated expression of IL-17 and inflammatory bowel disease (IBD) pathogenesis (PMID: 21672939).

Storage

Storage:

Store at 2-8°C. Avoid exposure to light. Stable for one year after shipment.

Storage Buffer:

PBS with 0.09% sodium azide and 0.5% BSA.

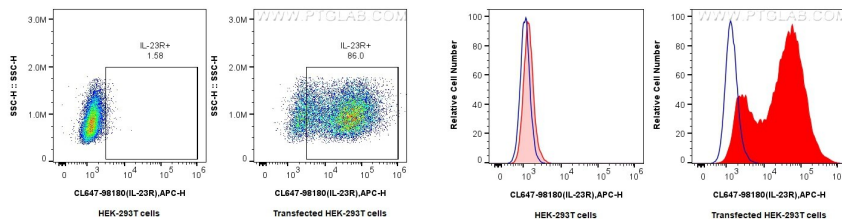
For technical support and original validation data for this product please contact:

T: 1 (888) 4PTGLAB (1-888-478-4522) (toll free in USA), or 1(312) 455-8498 (outside USA)

E: proteintech@ptglab.com
W: ptglab.com

This product is exclusively available under Proteintech Group brand and is not available to purchase from any other manufacturer.

Selected Validation Data



1x10⁶ Transfected HEK-293T cells were stained with 0.25 ug CoraLite® Plus 647 Anti-Human IL-23R Rabbit RecAb (CL647-98180, Clone:240905B5)(red), or 0.25 ug CoraLite® Plus 647 Rabbit IgG Isotype Control RecAb (CL647-98136, Clone: 240953C9) (blue). Cells were fixed with 4% PFA and permeabilized with Flow Cytometry Perm Buffer (PF00011-C).

1x10⁶ Transfected HEK-293T cells were stained with 0.25 ug CoraLite® Plus 647 Anti-Human IL-23R Rabbit RecAb (CL647-98180, Clone:240905B5)(red), or 0.25 ug CoraLite® Plus 647 Rabbit IgG Isotype Control RecAb (CL647-98136, Clone: 240953C9) (blue). Cells were fixed with 4% PFA and permeabilized with Flow Cytometry Perm Buffer (PF00011-C).