

For Research Use Only

CoraLite® Plus 647 Anti-Mouse HER2/ErbB2 Rabbit Recombinant Antibody

Catalog Number: CL647-98153



Basic Information

Catalog Number:

CL647-98153

Size:

100ug, 500 ug/ml

Source:

Rabbit

Isotype:

IgG

Immunogen Catalog Number:

EG0803

GenBank Accession Number:

NM_001003817.1

GeneID (NCBI):

13866

UNIPROT ID:

P70424

Full Name:

v-erb-b2 erythroblastic leukemia

viral oncogene homolog 2,

neuro/glioblastoma derived

oncogene homolog (avian)

Calculated MW:

139 kDa

Purification Method:

Protein A purification

CloneNo.:

241366E6

Recommended Dilutions:

FC: 0.25 ug per 10⁶ cells in 100 µl suspension

Excitation/Emission maxima wavelengths:

654 nm / 674 nm

Applications

Tested Applications:

FC

Species Specificity:

mouse

Positive Controls:

FC : NIH/3T3 cells,

Background Information

HER2, also known as ErbB2, Neu, and CD340, is a 185-kDa transmembrane glycoprotein member of the epidermal growth factor (EGF) receptor family of receptor tyrosine kinases. It has no ligand-binding domain and therefore cannot bind growth factors. However, it does bind tightly to other ligand-bound EGF receptor family members to form a heterodimer, stabilizing ligand binding and enhancing kinase-mediated activation of downstream signaling pathways, such as those involving mitogen-activated protein kinase and phosphatidylinositol-3 kinase.

Storage

Storage:

Store at 2-8°C. Avoid exposure to light. Stable for one year after shipment.

Storage Buffer:

PBS with 0.09% sodium azide, pH7.3

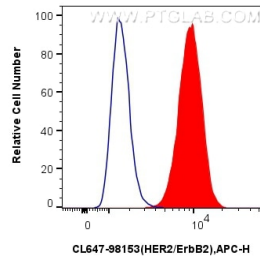
For technical support and original validation data for this product please contact:

T: 1 (888) 4PTGLAB (1-888-478-4522) (toll free in USA), or 1(312) 455-8498 (outside USA)

E: proteintech@ptglab.com
W: ptglab.com

This product is exclusively available under Proteintech Group brand and is not available to purchase from any other manufacturer.

Selected Validation Data



1×10^6 NIH/3T3 cells were surface stained with 0.25 μ g CoraLite® Plus 647 Anti-Mouse HER2/ErbB2 Rabbit RecAb (CL647-98153, Clone: 241366E6)(red) or 0.25 μ g CoraLite® Plus 647 Rabbit IgG Isotype Control RecAb (CL647-98136, Clone: 240953C9) (blue). Cells were not fixed.