

For Research Use Only

# CoraLite® Plus 647 Anti-Human IL-6 Rabbit Recombinant Antibody

Catalog Number:CL647-98087



## Basic Information

<b>Catalog Number:</b> CL647-98087	<b>GenBank Accession Number:</b> BC015511	<b>Purification Method:</b> Protein A purification
<b>Size:</b> 100tests , 5 ul/test	<b>GeneID (NCBI):</b> 3569	<b>CloneNo.:</b> 240670D12
<b>Source:</b> Rabbit	<b>ENSEMBL Gene ID:</b> ENSG00000136244	<b>Excitation/Emission maxima wavelengths:</b> 654 nm / 674 nm
<b>Isotype:</b> IgG	<b>UNIPROT ID:</b> P05231	
	<b>Full Name:</b> interleukin 6 (interferon, beta 2)	
	<b>Calculated MW:</b> 212 aa, 24 kDa	

## Applications

**Tested Applications:**  
FC (Intra)

**Species Specificity:**  
human

## Background Information

Interleukin-6 (IL-6) is an interleukin that acts as both a pro-inflammatory and anti-inflammatory cytokine. IL-6 protein is secreted by a variety of cell types including T cells and macrophages as phosphorylated and variably glycosylated molecule. IL-6 plays an essential role in the final differentiation of B-cells into Ig-secreting cells involved in lymphocyte and monocyte differentiation. It induces myeloma and plasmacytoma growth and induces nerve cells differentiation Acts on B-cells, T-cells, hepatocytes, hematopoietic progenitor cells and cells of the CNS. IL-6 is also considered a myokine, a cytokine produced from muscle, and is elevated in response to muscle contraction. IL-6 has been shown to interact with interleukin-6 receptor and glycoprotein 130. Additionally, IL-6 is involved in hematopoiesis, bone metabolism, and cancer progression, and has been defined an essential role in directing transition from innate to acquired immunity.

## Storage

**Storage:**  
Store at 2-8°C. Avoid exposure to light. Stable for one year after shipment.

**Storage Buffer:**  
PBS with 0.09% sodium azide and 0.5% BSA

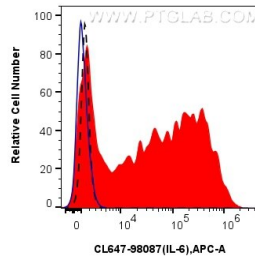
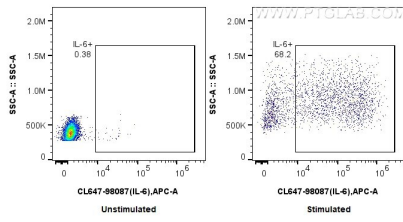
For technical support and original validation data for this product please contact:

T: 1 (888) 4PTGLAB (1-888-478-4522) (toll free in USA), or 1(312) 455-8498 (outside USA)

E: [proteintech@ptglab.com](mailto:proteintech@ptglab.com)  
W: [ptglab.com](http://ptglab.com)

**This product is exclusively available under Proteintech Group brand and is not available to purchase from any other manufacturer.**

## Selected Validation Data



1x10<sup>6</sup> untreated or LPS and Brefeldin A treated human PBMCs were intracellularly stained with 5 ul CoraLite® Plus 647 Anti-Human IL-6 Rabbit RecAb (CL647-98087, Clone: 240670D12). Cells were fixed with 4% PFA and permeabilized with Flow Cytometry Perm Buffer (PF00011-C). Monocytes were gated.

1x10<sup>6</sup> LPS and Brefeldin A treated human PBMCs were intracellularly stained with 5 ul CoraLite® Plus 647 Anti-Human IL-6 Rabbit RecAb (CL647-98087, Clone: 240670D12) or CoraLite® Plus 647 Rabbit IgG Isotype Control RecAb (CL647-98136, Clone: 240953C9) (blue). 1x10<sup>6</sup> untreated human PBMCs were intracellularly stained with 5 ul CoraLite® Plus 647 Anti-Human IL-6 Rabbit RecAb (CL647-98087, Clone:240670D12) (black, dashed). Cells were fixed with 4%

