

For Research Use Only

CoraLite® Plus 647 Anti-Human Fas/CD95 Rabbit Recombinant Antibody



Catalog Number: **CL647-98034**

Basic Information

Catalog Number: CL647-98034	GenBank Accession Number: NM_000043.6	Purification Method: Protein A purification
Size: 100tests , 5 ul/test	GeneID (NCBI): 355	CloneNo.: 240340E11
Source: Rabbit	UNIPROT ID: P25445-1	Excitation/Emission maxima wavelengths: 654 nm / 674 nm
Isotype: IgG	Full Name: Fas (TNF receptor superfamily, member 6)	
	Calculated MW: 38 kDa	

Applications

Tested Applications:
FC

Species Specificity:
human

Background Information

FAS, also named as CD95, APO-1, APT1, FAS1 and TNFRSF6, is a receptor for TNFSF6/FASLG. It is a cell surface receptor belonging to the TNF receptor superfamily, can mediate apoptosis by ligation with an agonistic anti-Fas antibody or Fas ligand. Stimulation of Fas results in the aggregation of its intracellular death domains, leading to the formation of the death-inducing signaling complex (DISC). FAS-mediated apoptosis may have a role in the induction of peripheral tolerance, in the antigen-stimulated suicide of mature T-cells, or both.

Storage

Storage:
Store at 2-8°C. Avoid exposure to light.

Storage Buffer:
PBS with 0.09% sodium azide and 0.5% BSA.

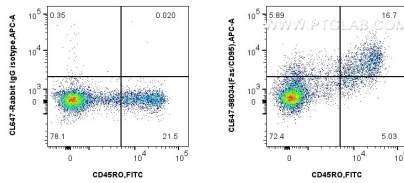
For technical support and original validation data for this product please contact:

T: 1 (888) 4PTGLAB (1-888-478-4522) (toll free in USA), or 1(312) 455-8498 (outside USA)

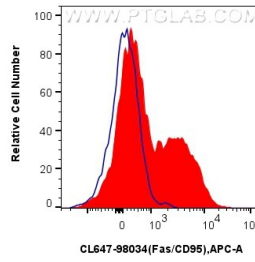
E: proteintech@ptglab.com
W: ptglab.com

This product is exclusively available under Proteintech Group brand and is not available to purchase from any other manufacturer.

Selected Validation Data



1x10⁶ human PBMCs were surface stained with FITC Plus Anti-Human CD45RO, and 5 ul CoraLite® Plus 647 Anti-Human Fas/CD95 Rabbit Recombinant Antibody (CL647-98034, Clone:240340E11) (right), or Isotype Control (left). Cells were not fixed.



1x10⁶ human PBMCs were surface stained with 5 ul CoraLite® Plus 647 Anti-Human Fas/CD95 Rabbit Recombinant Antibody (CL647-98034, Clone:240340E11) (red), or Isotype Control (blue). Cells were not fixed.