

For Research Use Only

# CoraLite® Plus 647 Anti-Mouse CD206 Rabbit Recombinant Antibody



Catalog Number: **CL647-98031**

## Basic Information

Catalog Number:

CL647-98031

Size:

100ug , 500 µg/ml

Source:

Rabbit

Isotype:

IgG

GenBank Accession Number:

NM\_008625.2

GeneID (NCBI):

17533

UNIPROT ID:

Q2HZ94

Full Name:

mannose receptor, C type 1

Calculated MW:

165 kDa

Purification Method:

Protein A purification

CloneNo.:

240344D12

Excitation/Emission maxima  
wavelengths:

654 nm / 674 nm

## Applications

Tested Applications:

FC

Species Specificity:

mouse

## Background Information

CD206, also named as MMR, CLEC13D and MRC1, is a type I membrane receptor that mediates the endocytosis of glycoproteins by macrophages. CD206 has been shown to bind high-mannose structures on the surface of potentially pathogenic viruses, bacteria, and fungi so that they can be neutralized by phagocytic engulfment. CD206 is a 170 kDa transmembrane protein which contains 5 domains: an amino-terminal cysteine-rich region, a fibronectin type II repeat, a series of eight tandem lectin-like carbohydrate recognition domains (responsible for the recognition of mannose and fucose), a transmembrane domain, and an intracellular carboxy-terminal tail. It is expressed on most tissue macrophages, in vitro derived dendritic cells, lymphatic and sinusoidal endothelia.

## Storage

Storage:

Store at 2-8°C. Avoid exposure to light.

Storage Buffer:

PBS with 0.09% sodium azide.

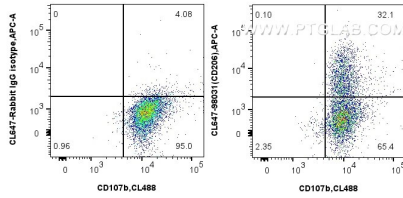
For technical support and original validation data for this product please contact:

T: 1 (888) 4PTGLAB (1-888-478-4522) (toll free  
in USA), or 1(312) 455-8498 (outside USA)

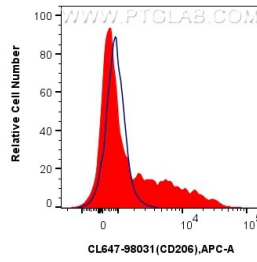
E: [proteintech@ptglab.com](mailto:proteintech@ptglab.com)  
W: [ptglab.com](http://ptglab.com)

**This product is exclusively available under Proteintech Group brand and is not available to purchase from any other manufacturer.**

## Selected Validation Data



1x10<sup>6</sup> mouse peritoneal macrophages were surface stained with CoraLite® Plus 488 Anti-Mouse CD107b / LAMP2 and 0.25 ug CoraLite® Plus 647 Anti-Mouse CD206 Rabbit Recombinant Antibody (CL647-98031, Clone: 240344D12) or Isotype Control. Cells were incubated with FC Receptor Block prior to staining. Cells were not fixed.



1x10<sup>6</sup> mouse peritoneal macrophages were surface stained with 0.25 ug CoraLite® Plus 647 Anti-Mouse CD206 Rabbit Recombinant Antibody (CL647-98031, Clone:240344D12) (red) or Isotype Control (blue). Cells were incubated with FC Receptor Block prior to staining. Cells were not fixed.