

For Research Use Only

CoraLite® Plus 647 Anti-Mouse TREM-1/CD354 Rabbit Recombinant Antibody

Catalog Number: CL647-98022



Basic Information

Catalog Number:

CL647-98022

Size:

100ug, 500 µg/ml

Source:

Rabbit

Isotype:

IgG

GenBank Accession Number:

NM_021406.5

GeneID (NCBI):

58217

UNIPROT ID:

Q9JKE2

Full Name:

triggering receptor expressed on myeloid cells 1

Calculated MW:

25 kDa

Purification Method:

Protein A purification

CloneNo.:

240219H1

Excitation/Emission maxima wavelengths:

654 nm / 674 nm

Applications

Tested Applications:

FC

Species Specificity:

mouse

Background Information

Triggering receptor expressed on myeloid cells 1 (TREM-1, also known as CD354) is a member of the immunoglobulin superfamily, which is expressed on neutrophils and monocytes. TREM1 plays a role in the innate immune system. TREM1 amplifies neutrophil and monocyte-mediated inflammatory responses triggered by bacterial and fungal infections by stimulating release of pro-inflammatory chemokines and cytokines, as well as increased surface expression of cell activation markers.

Storage

Storage:

Store at 2-8°C. Avoid exposure to light. Stable for one year after shipment.

Storage Buffer:

PBS with 0.09% sodium azide.

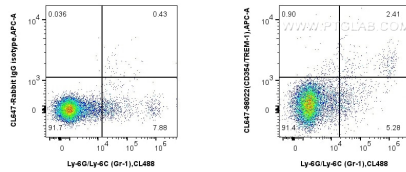
For technical support and original validation data for this product please contact:

T: 1 (888) 4PTGLAB (1-888-478-4522) (toll free in USA), or 1(312) 455-8498 (outside USA)

E: proteintech@ptglab.com
W: ptglab.com

This product is exclusively available under Proteintech Group brand and is not available to purchase from any other manufacturer.

Selected Validation Data



1x10⁶ mouse splenocytes were surface stained with CoraLite® Plus 488 Anti-Mouse Ly-6G/Ly-6C (Gr-1) and 0.25ug CoraLite® Plus 647 Anti-Mouse TREM-1/CD354 Rabbit Recombinant Antibody (CL647-98022, Clone:240219H1), or Isotype Control. Cells were not fixed.