

For Research Use Only

# CoraLite® Plus 647-conjugated Phospho-EGFR (Tyr1197) Recombinant antibody

Catalog Number: CL647-84906



## Basic Information

Catalog Number:

CL647-84906

Size:

100ul, Concentration: 1000 ug/ml by  
Nanodrop;

Source:

Rabbit

Isotype:

IgG

GenBank Accession Number:

BC094761

GeneID (NCBI):

1956

UNIPROT ID:

P00533

Full Name:

epidermal growth factor receptor  
(erythroblastic leukemia viral (v-erb-  
b) oncogene homolog, avian)

Calculated MW:

1210 aa, 134 kDa

Observed MW:

175 kDa

Purification Method:

Protein A purification

CloneNo.:

241826G10

Recommended Dilutions:

FC (Intra): 0.25 ug per 10<sup>6</sup> cells in a  
100 µl suspension

Excitation/Emission maxima

wavelengths:

654 nm / 674 nm

## Applications

Tested Applications:

FC (Intra)

Species Specificity:

human

Positive Controls:

FC (Intra) : EGF treated A431 cells,

## Background Information

Epidermal Growth Factor Receptor (EGFR) is one of the receptor tyrosine kinases (RTKs), members of the ErbB/HER family which consists of ErbB1 (EGFR or HER1), ErbB2 (HER2 or Neu), ErbB3 (HER3), and ErbB4 (HER4). The EGFR autophosphorylation sites Tyr-992 and Tyr-1173 (also known as Tyr 1197) have been shown to play a critical role in the activation of the MAPK cascade following EGF stimulation. (PMID: 15708852)

## Storage

Storage:

Store at -20°C. Avoid exposure to light. Stable for one year after shipment.

Storage Buffer:

PBS with 50% glycerol, 0.05% Proclin300, 0.5% BSA, pH7.3

Aliquoting is unnecessary for -20°C storage

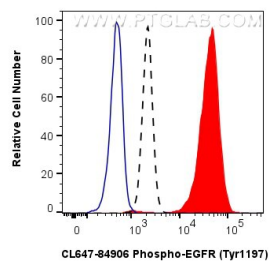
For technical support and original validation data for this product please contact:

T: 1 (888) 4PTGLAB (1-888-478-4522) (toll free  
in USA), or 1(312) 455-8498 (outside USA)

E: [proteintech@ptglab.com](mailto:proteintech@ptglab.com)  
W: [ptglab.com](http://ptglab.com)

This product is exclusively available under Proteintech Group brand and is not available to purchase from any other manufacturer.

## Selected Validation Data



1X10<sup>6</sup> A431 cells untreated (dashed lines) or treated with EGF which intracellularly stained with 0.25 ug Coralite® Plus 647 Phospho-EGFR (Tyr1197) Recombinant Antibody (CL647-84906, Clone:241826G10)(red), or 0.25 ug Coralite® Plus 647 Rabbit IgG Isotype Control RecAb (CL647-98136, Clone: 240953C9) (blue). Cells were fixed with 4% PFA and permeabilized with 90% MeOH.