

For Research Use Only

CoraLite® Plus 647-conjugated APOE Recombinant antibody

Catalog Number:CL647-84775-7



Basic Information

Catalog Number:

CL647-84775-7

Size:

100ul , Concentration: 1000 ug/ml by 348

Nanodrop;

Source:

Rabbit

Isotype:

IgG

GenBank Accession Number:

BC003557

GeneID (NCBI):

348

UNIPROT ID:

P02649

Full Name:

Apolipoprotein E

Calculated MW:

36 kDa

Purification Method:

Protein A purification

CloneNo.:

242310B2

Recommended Dilutions:

IF/ICC 1:50-1:500

Excitation/Emission maxima

wavelengths:

654 nm / 674 nm

Applications

Tested Applications:

IF/ICC

Species Specificity:

human, mouse

Positive Controls:

IF/ICC : HepG2 cells,

Background Information

The apolipoprotein E (APOE) is a 299-amino acid polypeptide that mediates the binding, internalization, and catabolism of lipoprotein particles, and also serves as a ligand for the LDL (apo B/E) receptor and for the specific apo-E receptor (chylomicron remnant) of hepatic tissues. The very strong association of the APOE $\epsilon 4$ allele with AD risk and its role in the accumulation of amyloid β in brains of people and animal models solidify the biological relevance of APOE isoforms but do not provide mechanistic insight (PMID: 9831633).

Storage

Storage:

Store at -20°C . Avoid exposure to light. Stable for one year after shipment.

Storage Buffer:

PBS with 50% Glycerol, 0.05% Proclin300, 0.5% BSA, pH 7.3.

Aliquoting is unnecessary for -20°C storage

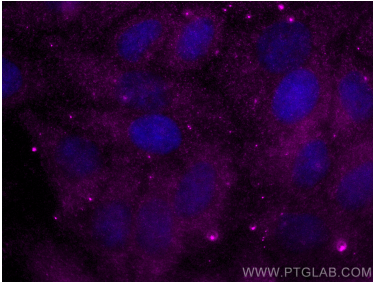
For technical support and original validation data for this product please contact:

T: 1 (888) 4PTGLAB (1-888-478-4522) (toll free in USA), or 1(312) 455-8498 (outside USA)

E: proteintech@ptglab.com
W: ptglab.com

This product is exclusively available under Proteintech Group brand and is not available to purchase from any other manufacturer.

Selected Validation Data



Immunofluorescent analysis of (-20°C Ethanol) fixed HepG2 cells using CoraLite® Plus 647 APOE antibody (CL647-84775-7, Clone: 242310B2) at dilution of 1:100.