

For Research Use Only

CoraLite® Plus 647-conjugated CD107a / LAMP1 Recombinant antibody

Catalog Number: CL647-84658-5



Basic Information

Catalog Number: CL647-84658-5	GenBank Accession Number: NM_005561.4	Purification Method: Protein A purification
Size: 100ul , Concentration: 1000 ug/ml by Nanodrop;	GeneID (NCBI): 3916	CloneNo.: 242116E8
Source: Rabbit	ENSEMBL Gene ID: ENSG00000185896	Recommended Dilutions: IF/ICC 1:50-1:500
Isotype: IgG	UNIPROT ID: P11279-1	Excitation/Emission maxima wavelengths: 654 nm / 674 nm
Immunogen Catalog Number: EG2611	Full Name: lysosomal-associated membrane protein 1	
	Calculated MW: 45 kDa	

Applications

Tested Applications: IF/ICC	Positive Controls: IF/ICC : HepG2 cells,
Species Specificity: human	

Background Information

LAMP1 (CD107a) is a heavily glycosylated membrane protein enriched in the lysosomal membrane. LAMP1 is extensively glycosylated with asparagine-linked oligosaccharides which protect it from intracellular proteolysis (PMID: 10521503). Although LAMP1 is expressed largely in the endosome-lysosomal membrane of cells, it is also found on the plasma membrane (PMID: 16168398). Elevated LAMP1 expression at the cell surface has also been detected during platelet and granulocytic cell activation, as well as in some tumor cells (PMID: 29085473). LAMP1 functions to provide selectins with carbohydrate ligands. This protein has also been shown to be a marker of degranulation on lymphocytes such as CD8+ and NK cells and may also play a role in tumor cell differentiation and metastasis (PMID: 18835598; 29085473; 9426697).

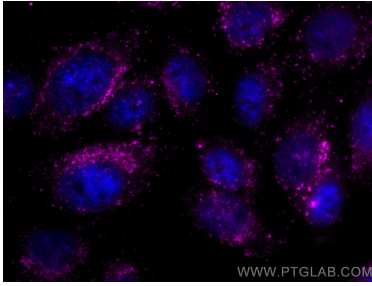
Storage

Storage:
Store at -20°C. Avoid exposure to light. Stable for one year after shipment.
Storage Buffer:
PBS with 50% glycerol, 0.05% Proclin300, 0.5% BSA, pH7.3
Aliquoting is unnecessary for -20°C storage

For technical support and original validation data for this product please contact:
T: 1 (888) 4PTGLAB (1-888-478-4522) (toll free in USA), or 1(312) 455-8498 (outside USA)
E: proteintech@ptglab.com
W: ptglab.com

This product is exclusively available under Proteintech Group brand and is not available to purchase from any other manufacturer.

Selected Validation Data



Immunofluorescent analysis of (4% PFA) fixed HepG2 cells using CoraLite® Plus 647 CD107a / LAMP1 antibody (CL647-84658-5, Clone: 242116E8) at dilution of 1:200.