

For Research Use Only

CoraLite® Plus 647-conjugated Phospho-HSP27 (Ser15) Recombinant antibody

Catalog Number: CL647-83332-3



Basic Information

Catalog Number: CL647-83332-3	GenBank Accession Number: BC012768	Purification Method: Protein A purification
Size: 100ul , Concentration: 1000 µg/ml by Nanodrop;	GeneID (NCBI): 3315	CloneNo.: 2D4
Source: Rabbit	UNIPROT ID: P04792	Excitation/Emission maxima wavelengths: 654 nm / 674 nm
Isotype: IgG	Full Name: heat shock 27kDa protein 1	
	Calculated MW: 19-23 kDa	
	Observed MW: 27 kDa	

Applications

Tested Applications:
FC (Intra)

Species Specificity:
human

Background Information

HSPB1, also named as HSP27, belongs to the mammalian small HSP family widely expressed in cells including the cytoplasm and nucleus. It has been reported that HSPB1 plays a key role in stress resistance, actin organization and numerous biological processes. HSPB1 can be phosphorylated in different stimulation such as cytokines, growth factors and peptide hormones on the site of Ser15, Ser78 and Ser82 by MAPKAP2 kinase. The phosphorylation of HSPB1 leads to a decrease in the size of HSPB1 oligomers. HSPB1 is associated with amyotrophic lateral sclerosis (ALS) (PMID: 8542580, 11960785, 10383393, 32231288)

Storage

Storage:
Store at -20°C. Avoid exposure to light. Stable for one year after shipment.

Storage Buffer:
PBS with 50% Glycerol, 0.05% Proclin300, 0.5% BSA, pH 7.3.

Aliquoting is unnecessary for -20°C storage

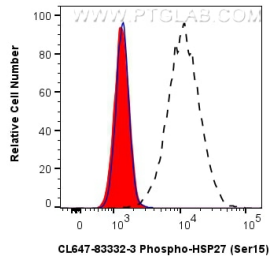
For technical support and original validation data for this product please contact:

T: 1 (888) 4PTGLAB (1-888-478-4522) (toll free
in USA), or 1(312) 455-8498 (outside USA)

E: proteintech@ptglab.com
W: ptglab.com

This product is exclusively available under Proteintech Group brand and is not available to purchase from any other manufacturer.

Selected Validation Data



1X10⁶ HeLa cells untreated (dashed lines) or treated with λ phosphatase which intracellularly stained with 0.25 ug Coralite® Plus 647 Phospho-Hsp27 (Ser15) Recombinant Antibody (CL647-83332-3, Clone:2D4)(red), or 0.25 ug Coralite® Plus 647 Rabbit IgG Isotype Control RecAb (CL647-98136, Clone: 240953C9) (blue). Cells were fixed with 4% PFA and permeabilized with 90% MeOH.