

For Research Use Only

CoraLite® Plus 647-conjugated GAPDH (Human Specific) Recombinant antibody

Catalog Number:CL647-80570



Basic Information

Catalog Number:

CL647-80570

Size:

100ul , Concentration: 1000 ug/ml by
Nanodrop;

Source:

Rabbit

Isotype:

IgG

Immunogen Catalog Number:

AG0766

GenBank Accession Number:

BC004109

GeneID (NCBI):

2597

UNIPROT ID:

P04406

Full Name:

glyceraldehyde-3-phosphate
dehydrogenase

Calculated MW:

36 kDa

Observed MW:

33 kDa

Purification Method:

Protein A purification

CloneNo.:

2G21

Recommended Dilutions:

WB 1:2000-1:16000

IF/ICC 1:50-1:500

**Excitation/Emission maxima
wavelengths:**

654 nm / 674 nm

Applications

Tested Applications:

WB, IF/ICC, FC (Intra)

Species Specificity:

human

Positive Controls:

WB : HEK-293 cells, HeLa cells, Jurkat cells

IF/ICC : HeLa cells,

Background Information

Glyceraldehyde-3-phosphate dehydrogenase (GAPDH) catalyzes the phosphorylation of glyceraldehyde-3-phosphate during glycolysis. GAPDH participates in nuclear events including transcription, binding RNA, RNA transportation, DNA replication, DNA repair and apoptosis. Being stably and constitutively expressed at high levels in most tissues and cells, GAPDH is considered a housekeeping protein. It is widely used as a control for RT-PCR and also loading control in electrophoresis and Western blotting. GAPDH is normally expressed in cellular cytoplasm or membrane, but can occasionally translocate to the nucleus after the addition of post-translational modifications such as S-nitrosylation. This antibody is raised against full length GAPDH of human origin. It can recognize the 36 kDa GAPDH protein in most cells/tissues. In addition, a band below 36 kDa can always be detected as the isoform or spliced product of GAPDH (PMID: 23885286, 23877755, 19368702). Please note that some physiological factors, such as hypoxia and diabetes, increase GAPDH expression in certain cell types. For murine tissue samples, conjugated mouse antibody HRP-60004 and rabbit antibody 10494-1-AP are preferable. 80570-1-RR is human specific.

Storage

Storage:

Store at -20°C. Avoid exposure to light. Stable for one year after shipment.

Storage Buffer:

PBS with 50% Glycerol, 0.05% Proclin300, 0.5% BSA, pH 7.3.

Aliquoting is unnecessary for -20°C storage

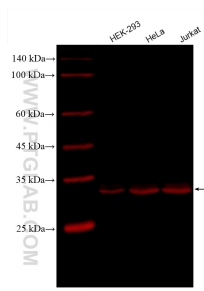
For technical support and original validation data for this product please contact:

T: 1 (888) 4PTGLAB (1-888-478-4522) (toll free
in USA), or 1(312) 455-8498 (outside USA)

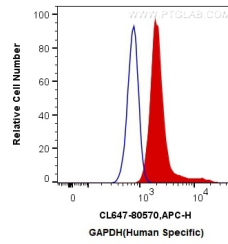
E: proteintech@ptglab.com
W: ptglab.com

This product is exclusively available under Proteintech Group brand and is not available to purchase from any other manufacturer.

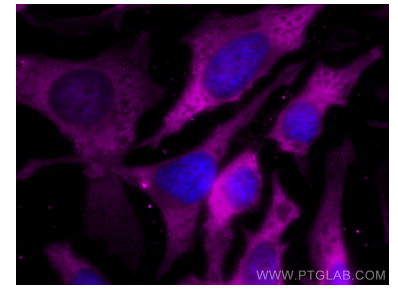
Selected Validation Data



Various lysates were subjected to SDS PAGE followed by western blot with CL647-80570 (GAPDH (Human Specific) antibody) at dilution of 1:8000 incubated at room temperature for 1.5 hours.



1X10⁶ HeLa cells were intracellularly stained with 0.4 ug CoraLite® Plus 647 Anti-Human GAPDH (Human Specific) (CL647-80570, Clone:2G21) (red), or 0.4 ug Control Antibody. Cells were fixed with 4% PFA and permeabilized with Flow Cytometry Perm Buffer (PF00011-C).



Immunofluorescent analysis of (-20°C Methanol) fixed HeLa cells using CoraLite® Plus 647 GAPDH (Human Specific) antibody (CL647-80570, Clone: 2G21) at dilution of 1:200.