

For Research Use Only

CoraLite® Plus 647-conjugated Phospho-STAT5A (Ser726)/STAT5B (Ser731) Recombinant antibody

Catalog Number: CL647-80138-2



Basic Information

Catalog Number:

CL647-80138-2

Size:

100ul, Concentration: 1000 µg/ml by Nanodrop;

Source:

Rabbit

Isotype:

IgG

GenBank Accession Number:

BC027036

GeneID (NCBI):

6776

UNIPROT ID:

P42229

Full Name:

signal transducer and activator of transcription 5A

Calculated MW:

794 aa, 92 kDa

Observed MW:

90-95 kDa

Purification Method:

Protein A purification

CloneNo.:

240709D6

Excitation/Emission maxima wavelengths:

654 nm / 674 nm

Applications

Tested Applications:

FC (Intra)

Species Specificity:

human

Background Information

STAT5 proteins consisting of STAT5A and STAT5B are the main targets of IL-3 signaling. Upon cytokine stimulation, JAK2 phosphorylates STAT5 and the phosphorylated STAT5 proteins dimerize and translocate into the nucleus, where, by binding DNA, they activate target genes including c-fos. In addition to this JAK-catalyzed tyrosine phosphorylation, STAT5 may undergo serine phosphorylation in the carboxy-terminal P(M)SP site in response to prolactin. (PMID: 15795318)

Storage

Storage:

Store at -20°C. Avoid exposure to light. Stable for one year after shipment.

Storage Buffer:

PBS with 50% Glycerol, 0.05% Proclin300, 0.5% BSA, pH 7.3.

Aliquoting is unnecessary for -20°C storage

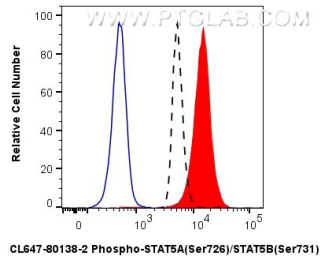
For technical support and original validation data for this product please contact:

T: 1 (888) 4PTGLAB (1-888-478-4522) (toll free in USA), or 1(312) 455-8498 (outside USA)

E: proteintech@ptglab.com
W: ptglab.com

This product is exclusively available under Proteintech Group brand and is not available to purchase from any other manufacturer.

Selected Validation Data



1X10⁶ TF-1 cells untreated (dashed lines) or treated with GM-CSF which intracellularly stained with 0.25 ug CoraLite® Plus 647 Phospho-Stat5a (Ser726)/Stat5b (Ser731) Recombinant Antibody (CL647-80138-2, Clone:240709D6)(red), or 0.25 ug CoraLite® Plus 647 Rabbit IgG Isotype Control RecAb (CL647-98136, Clone: 240953C9) (blue). Cells were fixed with 4% PFA and permeabilized with 90% MeOH.