

For Research Use Only



# CoraLite® Plus 647-conjugated smooth muscle actin specific Monoclonal antibody

Catalog Number: **CL647-67735** **3 Publications**

## Basic Information

<b>Catalog Number:</b> CL647-67735	<b>GenBank Accession Number:</b> NM_001613	<b>Purification Method:</b> Protein G purification
<b>Size:</b> 100ul , Concentration: 1000 µg/ml by 59 Nanodrop;	<b>GeneID (NCBI):</b> UNIPROT ID: P62736	<b>CloneNo.:</b> 1E9A11
<b>Source:</b> Mouse	<b>Full Name:</b> actin, alpha 2, smooth muscle, aorta	<b>Recommended Dilutions:</b> IF 1:50-1:500
<b>Isotype:</b> IgG1	<b>Calculated MW:</b> 42 kDa	<b>Excitation/Emission maxima wavelengths:</b> 654 nm / 674 nm
	<b>Observed MW:</b> 42 kDa	

## Applications

<b>Tested Applications:</b> FC (Intra), IF	<b>Positive Controls:</b> IF : mouse heart tissue,
<b>Cited Applications:</b> FC, IF	
<b>Species Specificity:</b> Human, mouse, rat, pig	
<b>Cited Species:</b> human, mouse	

## Background Information

ACTA2 (also known as  $\alpha$ -smooth muscle actin or  $\alpha$ -SMA) belongs to the actin family. Actins are highly conserved proteins that are involved in various types of cell motility and are ubiquitously expressed in all eukaryotic cells. ACTA2 is primarily expressed in vascular smooth muscle and anti-ACTA2 is commonly used to marker smooth muscle cells.

## Notable Publications

Author	Pubmed ID	Journal	Application
Shiqi Gao	38237739	Lab Invest	IF
Chuxiang Lei	37660071	Nat Commun	FC
Arun Das	37563850	J Med Virol	IF

## Storage

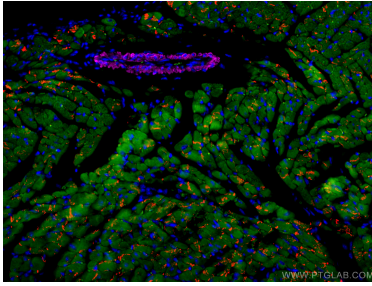
**Storage:**  
Store at -20°C. Avoid exposure to light.  
**Storage Buffer:**  
PBS with 50% Glycerol, 0.05% Proclin300, 0.5% BSA, pH 7.3.  
Aliquoting is unnecessary for -20°C storage

\*\*\* 20ul sizes contain 0.1% BSA

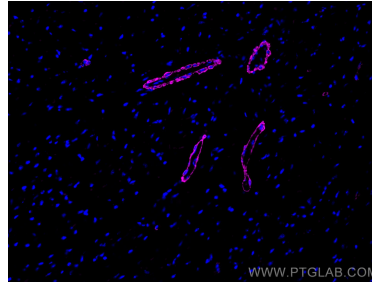
For technical support and original validation data for this product please contact:  
T: 1 (888) 4PTGLAB (1-888-478-4522) (toll free in USA), or 1(312) 455-8498 (outside USA)  
E: proteintech@ptglab.com  
W: ptglab.com

This product is exclusively available under Proteintech Group brand and is not available to purchase from any other manufacturer.

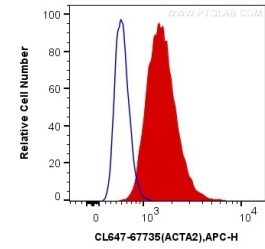
## Selected Validation Data



Immunofluorescent analysis of (4% PFA) fixed mouse heart tissue using CoraLite® Plus 647 smooth muscle actin specific antibody (CL647-67735, Clone: 1E9A11) at dilution of 1:100, CoraLite®488 Cardiac Troponin I antibody (CL488-66376, Clone: 1D5D6, green), CoraLite®594 N-cadherin antibody (CL594-22018, red). DAPI (blue).



Immunofluorescent analysis of (4% PFA) fixed mouse heart tissue using CoraLite® Plus 647 smooth muscle actin specific antibody (CL647-67735, Clone: 1E9A11) at dilution of 1:200.



1X10<sup>6</sup> C2C12 cells were intracellularly stained with 0.4 ug CoraLite® Plus 647 Anti-Human smooth muscle actin specific (CL647-67735, Clone:1E9A11) (red), or 0.4 ug Control Antibody. Cells were fixed with 4% PFA and permeabilized with Flow Cytometry Perm Buffer (PF00011-C).