

For Research Use Only

CoraLite® Plus 647-conjugated GFP tag Monoclonal antibody

Catalog Number:CL647-66002



Basic Information

Catalog Number:

CL647-66002

GenBank Accession Number:

M62653

Purification Method:

Protein A purification

Size:

100ul , Concentration: 1000 µg/ml by
Nanodrop;

GeneID (NCBI):

Full Name:

CloneNo.:

1E10H7

Source:

Mouse

Calculated MW:

26 kDa

Recommended Dilutions:

IF/ICC 1:50-1:500

Isotype:

IgG2a

Excitation/Emission maxima
wavelengths:

654 nm / 674 nm

Immunogen Catalog Number:

AG2128

Applications

Tested Applications:

IF/ICC, FC (Intra)

Species Specificity:

recombinant protein

Positive Controls:

IF/ICC : Transfected HEK-293 cells,

Background Information

Green Fluorescent Proteins (GFPs) encompass a diverse range of proteins carrying a green chromophore, originating from various species and forming different protein lineages. Wildtype GFP consists of 238 amino acid residues (26.9 kDa). GFP was first identified in the jellyfish *Aequorea victoria*. It emits green light with a peak wavelength of 509 nm upon excitation by blue light at 395 nm. When fused with other proteins, GFP serves as a versatile reporter protein e.g. for quantifying expression levels or facilitates visualization of subcellular localization through fluorescence microscopy. This antibody is a mouse (IgG2a) monoclonal antibody against GFP reactive to GFP, eGFP, eYFP, YFP and CFP. This antibody is labeled with CoraLite Plus 647.

Storage

Storage:

Store at -20°C. Avoid exposure to light. Stable for one year after shipment.

Storage Buffer:

PBS with 50% Glycerol, 0.05% Proclin300, 0.5% BSA, pH 7.3.

Aliquoting is unnecessary for -20°C storage

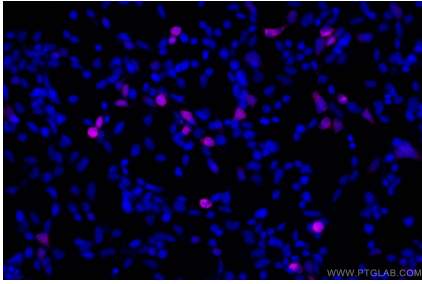
For technical support and original validation data for this product please contact:

T: 1 (888) 4PTGLAB (1-888-478-4522) (toll free
in USA), or 1(312) 455-8498 (outside USA)

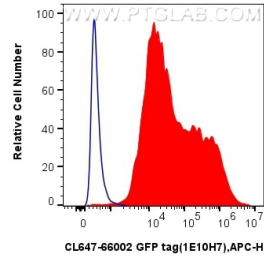
E: proteintech@ptglab.com
W: ptglab.com

This product is exclusively available under Proteintech Group brand and is not available to purchase from any other manufacturer.

Selected Validation Data



Immunofluorescent analysis of (-20°C Ethanol) fixed Transfected HEK-293 cells using CoraLite® Plus 647 GFP tag antibody (CL647-66002, Clone: 1E10H7) at dilution of 1:200.



1X10⁶ Transfected HEK-293 cells were intracellularly stained with 0.2 ug CoraLite® Plus 647 Anti-Aequorea victoria GFP tag (CL647-66002, Clone:1E10H7) (red), or 0.2 ug CoraLite® Plus 647 Mouse IgG2a Isotype Control (C1.18.4) (CL647-65208, Clone: C1.18.4) (blue). Cells were fixed with 4% PFA and permeabilized with Flow Cytometry Perm Buffer (PF00011-C).