

For Research Use Only

# CoraLite® Plus 647 Anti-Human CD107a / LAMP1 (H4A3) Mouse IgG2a Recombinant Antibody

Catalog Number: CL647-65596



## Basic Information

**Catalog Number:**

CL647-65596

**Size:**

100tests , 5 ul/test

**Source:**

Mouse

**Isotype:**

IgG2a

**GenBank Accession Number:**

BC006345

**GeneID (NCBI):**

3916

**ENSEMBL Gene ID:**

ENSG00000185896

**Full Name:**

lysosomal-associated membrane protein 1

**Calculated MW:**

45 kDa

**Purification Method:**

Protein A purification

**CloneNo.:**

H4A3

**Excitation/Emission maxima wavelengths:**

654 nm / 674 nm

## Applications

**Tested Applications:**

FC (Intra)

**Species Specificity:**

human

## Background Information

LAMP1 (CD107a) is a heavily glycosylated membrane protein enriched in the lysosomal membrane. LAMP1 is extensively glycosylated with asparagine-linked oligosaccharides which protect it from intracellular proteolysis (PMID: 10521503). Although LAMP1 is expressed largely in the endosome-lysosomal membrane of cells, it is also found on the plasma membrane (PMID: 16168398). Elevated LAMP1 expression at the cell surface has also been detected during platelet and granulocytic cell activation, as well as in some tumor cells (PMID: 29085473). LAMP1 functions to provide selectins with carbohydrate ligands. This protein has also been shown to be a marker of degranulation on lymphocytes such as CD8+ and NK cells and may also play a role in tumor cell differentiation and metastasis (PMID: 18835598; 29085473; 9426697).

## Storage

**Storage:**

Store at 2-8°C. Avoid exposure to light. Stable for one year after shipment.

**Storage Buffer:**

PBS with 0.09% sodium azide.

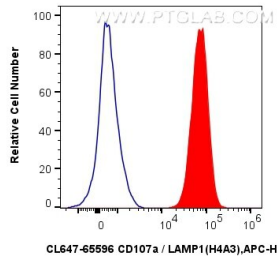
For technical support and original validation data for this product please contact:

T: 1 (888) 4PTGLAB (1-888-478-4522) (toll free in USA), or 1(312) 455-8498 (outside USA)

E: [proteintech@ptglab.com](mailto:proteintech@ptglab.com)  
W: [ptglab.com](http://ptglab.com)

**This product is exclusively available under Proteintech Group brand and is not available to purchase from any other manufacturer.**

## Selected Validation Data



1x10<sup>6</sup> Jurkat cells were intracellularly stained with 5ul CoraLite® Plus 647 Anti-Human CD107a / LAMP1 (H4A3) Mouse IgG2a RecAb (CL647-65596, Clone: H4A3) (red) or CoraLite® Plus 647 Mouse IgG2a Isotype Control (C1.18.4) (CL647-65208, Clone: C1.18.4) (blue). Cells were fixed with 4% PFA and permeabilized with Flow Cytometry Perm Buffer (PF00011-C).