

For Research Use Only

# CoraLite® Plus 647 Anti-Human CD18 (TS1/18) Mouse IgG2a Recombinant Antibody

Catalog Number: CL647-65595



## Basic Information

<b>Catalog Number:</b> CL647-65595	<b>GenBank Accession Number:</b> BC005861	<b>Purification Method:</b> Protein A purification
<b>Size:</b> 100tests , 5 ul/test	<b>GeneID (NCBI):</b> 3689	<b>CloneNo.:</b> TS1/18
<b>Source:</b> Mouse	<b>ENSEMBL Gene ID:</b> ENSG00000160255	<b>Excitation/Emission maxima wavelengths:</b> 654 nm / 674 nm
<b>Isotype:</b> IgG2a	<b>Full Name:</b> integrin, beta 2 (complement component 3 receptor 3 and 4 subunit)	
	<b>Calculated MW:</b> 85 kDa	

## Applications

**Tested Applications:**  
FC

**Species Specificity:**  
human

## Background Information

CD18, also known as integrin beta-2, is a transmembrane protein that forms heterodimers with CD11a, CD11b, CD11c, CD11d (PMID: 1968349). CD11a/CD18 (LFA-1) is expressed by all leukocytes, while CD11b/CD18 (Mac-1) and CD11c/CD18 (p150,95) are normally restricted to expression on monocytes, macrophages, polymorphonuclear lymphocytes (PMNs), and natural killer cells (PMID: 1968349; 3109455; 10946284). CD18 plays an important role in mediating cell adhesion during immune response and defects of CD18 cause leukocyte adhesion deficiency (PMID: 3594570).

## Storage

**Storage:**  
Store at 2-8°C. Avoid exposure to light. Stable for one year after shipment.

**Storage Buffer:**  
PBS with 0.09% sodium azide and 0.5% BSA.

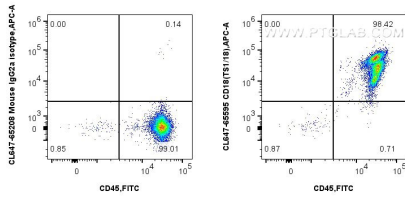
For technical support and original validation data for this product please contact:

T: 1 (888) 4PTGLAB (1-888-478-4522) (toll free in USA), or 1(312) 455-8498 (outside USA)

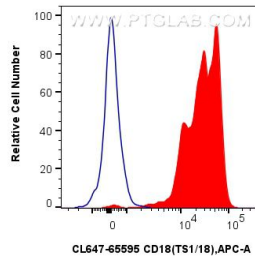
E: [proteintech@ptglab.com](mailto:proteintech@ptglab.com)  
W: [ptglab.com](http://ptglab.com)

**This product is exclusively available under Proteintech Group brand and is not available to purchase from any other manufacturer.**

## Selected Validation Data



1x10<sup>6</sup> human PBMCs were surface stained with FITC Plus Anti-Human CD45 (HI30) (FITC-65109, Clone: HI30) and 5 ul CoraLite® Plus 647 Anti-Human CD18 (TS1/18) Mouse IgG2a Recombinant Antibody (CL647-65595, Clone:TS1/18), or CoraLite® Plus 647 Mouse IgG2a Isotype Control (C1.18.4) (CL647-65208, Clone: C1.18.4). Cells were incubated with FC Receptor Block prior to staining. Cells were not fixed.



1x10<sup>6</sup> human PBMCs were surface stained with 5 ul CoraLite® Plus 647 Anti-Human CD18 (TS1/18) Mouse IgG2a Recombinant Antibody (CL647-65595, Clone:TS1/18)(red), or CoraLite® Plus 647 Mouse IgG2a Isotype Control (C1.18.4) (CL647-65208, Clone: C1.18.4)(blue). Cells were incubated with FC Receptor Block prior to staining. Cells were not fixed.