

For Research Use Only

CoraLite® Plus 647 Anti-Human CD19 (4G7) Mouse IgG2a Recombinant Antibody

Catalog Number: CL647-65562



Basic Information

Catalog Number:

CL647-65562

Size:

100tests, 5 µl/test

Source:

Mouse

Isotype:

IgG2a

GenBank Accession Number:

BC006338

GeneID (NCBI):

930

ENSEMBL Gene ID:

ENSG00000177455

UNIPROT ID:

P15391

Full Name:

CD19 molecule

Calculated MW:

556 aa, 61 kDa

Purification Method:

Protein A purification

CloneNo.:

4G7

Excitation/Emission maxima wavelengths:

654 nm / 674 nm

Applications

Tested Applications:

FC

Species Specificity:

Human

Background Information

CD19 is a 95 kDa type I transmembrane glycoprotein belonging to the immunoglobulin superfamily (PMID: 2472450). It is expressed by B cells and follicular dendritic cells. CD19 is up-regulated at the step of B-lineage commitment during the differentiation of the hematopoietic stem cell, it remains on during subsequent stages of differentiation until finally down-regulated during terminal differentiation into plasma cells (PMID: 8528044). CD19 is involved in B cell development, activation and differentiation. It is the dominant component for the signaling complex on B cells that includes CD21 (CR2), CD81 (TAPA-1) and CD225 and acts as a critical co-receptor for BCR signal transduction (PMID: 23210908).

Storage

Storage:

Store at 2-8°C. Stable for one year after shipment.

Storage Buffer:

PBS with 0.09% sodium azide and 0.5% BSA.

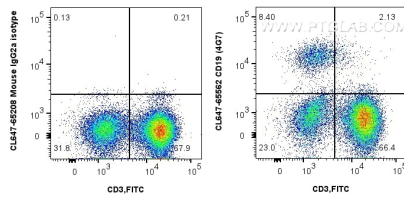
For technical support and original validation data for this product please contact:

T: 1 (888) 4PTGLAB (1-888-478-4522) (toll free in USA), or 1(312) 455-8498 (outside USA)

E: proteintech@ptglab.com
W: ptglab.com

This product is exclusively available under Proteintech Group brand and is not available to purchase from any other manufacturer.

Selected Validation Data



1×10^6 human PBMCs were surface stained with FITC Anti-Human CD3 and 5 μ l CoraLite® Plus 647 Anti-Human CD19 Mouse Recombinant Antibody (CL647-65562, Clone:4G7), or CoraLite® Plus 647 Mouse IgG2a Isotype Control (CL647-65208, Clone: C1.18.4). Cells were not fixed. Lymphocytes were gated.