

For Research Use Only

CoraLite® Plus 647 Anti-Human CD16 (3G8) Rabbit Recombinant Antibody



Catalog Number: **CL647-65550**

Basic Information

Catalog Number: CL647-65550	GenBank Accession Number: BC017865	Purification Method: Affinity purification
Size: 100tests , 5 µl/test	GeneID (NCBI): 2214	CloneNo.: 3G8
Source: Rabbit	ENSEMBL Gene ID: ENSG00000203747	Excitation/Emission maxima wavelengths: 654 nm / 674 nm
Isotype: IgG	Full Name: Fc fragment of IgG, low affinity IIIa, receptor (CD16a)	
	Calculated MW: 254 aa, 29 kDa	

Applications

Tested Applications:
FC

Species Specificity:
Human

Background Information

CD16 is a 50-70-kDa low affinity Fc receptor found on the surface of natural killer cells, neutrophil polymorphonuclear leukocytes, monocytes and macrophages. CD16 mediates antibody-dependent cellular cytotoxicity (ADCC) and other antibody-dependent responses, such as phagocytosis. CD16 has been identified as Fc receptors Fcγ RIIIa (CD16a) and Fcγ RIIIb (CD16b), encoded by two nearly identical genes, FCGR3A and FCGR3B.

Storage

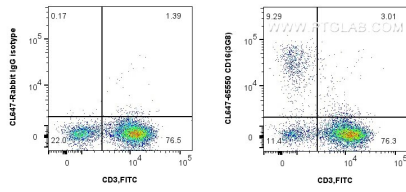
Storage:
Store at 2-8°C. Avoid exposure to light. Stable for one year after shipment.

Storage Buffer:
PBS with 0.09% sodium azide and 0.5% BSA.

For technical support and original validation data for this product please contact:
T: 1 (888) 4PTGLAB (1-888-478-4522) (toll free in USA), or 1(312) 455-8498 (outside USA) E: proteintech@ptglab.com
W: ptglab.com

This product is exclusively available under Proteintech Group brand and is not available to purchase from any other manufacturer.

Selected Validation Data



1x10⁶ human PBMCs were surface stained with 5 ul CoraLite® Plus 647 Anti-Human CD16 Rabbit Recombinant Antibody (CL647-65550, Clone:3G8), and 5 ul FITC Plus Anti-Human CD3 (OKT3) (FITC-65133, Clone: OKT3), and 5 ul CoraLite® Plus 647-conjugated Rabbit IgG control Rabbit PolyAb (CL647-30000). Cells were not fixed. Lymphocytes and monocytes were gated.