

For Research Use Only

CoraLite® Plus 647 Anti-Human CD163 (GHI/61) Mouse IgG1 Recombinant Antibody



Catalog Number: **CL647-65522**

Basic Information

| | | |
|--------------------------------|---------------------------------------|---|
| Catalog Number: CL647-65522 | GenBank Accession Number: BC051281 | Purification Method: Affinity purification |
| Size: 100tests , 5 µl/test | GeneID (NCBI): 9332 | CloneNo.: GHI/61 |
| Source: Mouse | ENSEMBL Gene ID: ENSG00000177575 | Excitation/Emission maxima wavelengths: 654 nm / 674 nm |
| Isotype: IgG1 | Full Name: CD163 molecule | |
| | Calculated MW: 1156 aa, 125 kDa | |

Applications

Tested Applications:
FC

Species Specificity:
Human

Storage

Storage:
Store at 2-8°C. Avoid exposure to light. Stable for one year after shipment.
Storage Buffer:
PBS with 0.09% sodium azide and 0.5% BSA.

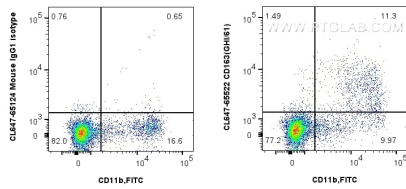
For technical support and original validation data for this product please contact:

T: 1 (888) 4PTGLAB (1-888-478-4522) (toll free
in USA), or 1(312) 455-8498 (outside USA)

E: proteintech@ptglab.com
W: ptglab.com

This product is exclusively available under Proteintech Group brand and is not available to purchase from any other manufacturer.

Selected Validation Data



1x10⁶ human PBMCs were surface stained with 5 ul CoraLite® Plus 647 Anti-Human CD163 Mouse Recombinant Antibody (CL647-65522, Clone: GHI/61) or CoraLite® Plus 647 Mouse IgG1 Isotype Control (MOPC-21) (CL647-65124, Clone: MOPC-21), and 5 ul FITC Plus Anti-Human CD11b (ICRF44) (FITC-65116, Clone: ICRF44). Cells were incubated with FC Receptor Block prior to staining. Cells were not fixed.