

For Research Use Only

CoraLite® Plus 647 Anti-Human CD58 (TS2/9) Mouse IgG1 Recombinant Antibody



Catalog Number: **CL647-65517**

Basic Information

Catalog Number: CL647-65517	GenBank Accession Number: BC005930	Purification Method: Affinity purification
Size: 100tests , 5 µl/test	GeneID (NCBI): 965	CloneNo.: TS2/9
Source: Mouse	Full Name: CD58 molecule	Excitation/Emission maxima wavelengths: 654 nm / 674 nm
Isotype: IgG1	Calculated MW: 28 kDa	

Applications

Tested Applications:
FC

Species Specificity:
Human

Background Information

CD58, also known as lymphocyte function-associated antigen 3 (LFA-3), is a heavily glycosylated protein of 55-70 kDa that is expressed on a broad range of hematopoietic and non-hematopoietic cells. CD58 is involved in immune recognition of tumor cells via binding of the CD2 receptor expressed on cytotoxic T cells.

Storage

Storage:
Store at 2-8°C. Avoid exposure to light. Stable for one year after shipment.

Storage Buffer:
PBS with 0.09% sodium azide and 0.5% BSA.

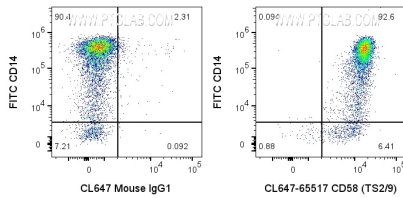
For technical support and original validation data for this product please contact:

T: 1 (888) 4PTGLAB (1-888-478-4522) (toll free
in USA), or 1(312) 455-8498 (outside USA)

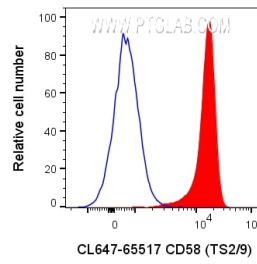
E: proteintech@ptglab.com
W: ptglab.com

This product is exclusively available under Proteintech Group brand and is not available to purchase from any other manufacturer.

Selected Validation Data



1x10⁶ human PBMCs were surface stained with FITC Anti-Human CD14 and 5 ul CoraLite® Plus 647 Anti-Human CD58 Mouse Recombinant Antibody (CL647-65517, Clone:TS2/9) or CoraLite® Plus 647 Mouse IgG1 Isotype Control (CL647-65124, Clone: MOPC-21). Cells were not fixed. Cells were treated with FC Receptor Block prior to staining. Monocytes were gated.



1x10⁶ human PBMCs were surface stained with 5 ul CoraLite® Plus 647 Anti-Human CD58 Mouse Recombinant Antibody (CL647-65517, Clone:TS2/9) or CoraLite® Plus 647 Mouse IgG1 Isotype Control (CL647-65124, Clone: MOPC-21). Cells were not fixed. Cells were treated with FC Receptor Block prior to staining. Monocytes were gated.